

# Forged Machinery Eye Bolts



*Fatigue Rated*

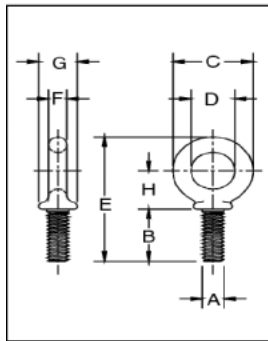


**SEE APPLICATION AND WARNING INFORMATION**

**S-279 / M-279**



- Forged Steel - Quenched & Tempered.
- Working Load Limits shown are for In-line pull.
- Recommended for straight line pull.
- Fatigue rated at 1-1/2 times the Working Load Limit at 20,000 cycles.
- S-279 threaded UNC.
- M-279 metric threaded.



## Shoulder Type Machinery Eye Bolts

### S-279 UNC

Size	S-279 Stock No.	Working Load Limit (lbs.)*	Weight Per 100 (lbs.)	Dimensions (in.)							
				A ** Thread	B	C	D	E	F	G	H
1/4 x 1	9900182	650	5.00	1/4 - 20	1.02	1.13	.75	2.29	.19	.53	.70
5/16 x 1-1/8	9900191	1200	9.00	5/16 - 18	1.15	1.38	.88	2.74	.25	.59	.90
3/8 x 1-1/4	9900208	1550	15.00	3/8 - 16	1.27	1.62	1.00	3.07	.31	.69	1.00
1/2 x 1-1/2	9900217	2600	28.00	1/2 - 13	1.53	1.95	1.19	3.70	.38	.91	1.20
5/8 x 1-3/4	9900226	5200	55.00	5/8 - 11	1.79	2.38	1.38	4.45	.50	1.13	1.47
3/4 x 2	9900235	7200	96.00	3/4 - 10	2.05	2.76	1.50	5.07	.63	1.38	1.64
7/8 x 2-1/4	9900244	10600	154.00	7/8 - 9	2.31	3.25	1.75	5.87	.75	1.56	1.94
1 x 2-1/2	9900253	13300	238.00	1 - 8	2.57	3.76	2.00	6.66	.88	1.81	2.21
1-1/4 x 3	9900262	21000	399.00	1 1/4 - 7	3.09	4.50	2.50	7.95	1.00	2.28	2.61
1-1/2 x 3-1/2	9900271	24000	720.00	1 1/2 - 6	3.60	5.50	3.00	9.49	1.25	2.75	3.14

\* Ultimate Load is 5 times the Working Load Limit. Maximum Proof Load is 2 times the Working Load Limit.

\*\* All bolts threaded UNC.

### M-279 Metric

Size	M-279 Stock No.	Working Load Limit (kg)*	Weight Per 100 (kg)	Dimensions (mm)						
				A ** Thread	B	C	D	E	F	G
M 6	10457534	200	.03	6	13.0	28.7	19.1	58.0	4.9	13.5
M 8	10457894	400	.05	8	13.0	35.1	22.4	59.7	6.4	15.0
M 10	10458334	640	.08	10	17.0	41.1	25.4	78.0	7.9	17.5
M 12	10458694	1000	.18	12	20.5	49.5	30.2	94.0	9.7	23.1
M 16	10459134	1800	.40	16	27.0	60.5	35.1	113	12.7	28.7
M 20	10459954	2500	.90	20	30.0	70.0	38.1	129	16.0	35.1
M 24	10460294	4000	.95	27	36.0	95.5	51.0	169	22.4	46.0
M 30	10460754	6000	1.6	30	45.0	114	53.5	202	25.4	58.0
M 36	10461094	8500	2.7	36	54.0	140	76.0	241	31.8	70.0

\* Ultimate Load is 5 times the Working Load Limit. Maximum Proof Load is 2 times the Working Load Limit.

\*\* On Request: Special threading, as forged bolts for customer conversion.