

Max air balancer

CM offers precise positioning or repetitive transferring of loads as heavy as 600 pounds. With up to 8" of float, the operator can position the load easily and precisely by hand.

- Limitless start/stop cycles for reliable performance and productivity
- Exclusive lost load protection system
- Extra safety with exclusive lock out-tag out device that makes the balancer inoperable in the event of damage or required maintenance
- Unique pressure compensated flow control maintains lifting speed regardless of fluctuations in plant air pressure
- Chain lift eliminates spinning or fraying plus delivers long wear life
- 18 pocket liftwheel for smooth balancer operation
- True vertical chain travel (80" max.)
- Ergonomic pendant control station
- Forged steel latch type lower hook with bearing for free rotation
- Supplied complete with chain container for loose end chain
- Optional Series 0980 low headroom trolley to operate 2⁵/₈" through 5⁵/₈" flange beams
- Optional Latchlok hook
- Optional balance control for full 8 feet float capabilities
- Operates on 90 P.S.I. plant air, not 100 P.S.I. like comparable units
- Standard pendant drop 9'-6"
- Made in U.S.A.



CM Max balancer specifications

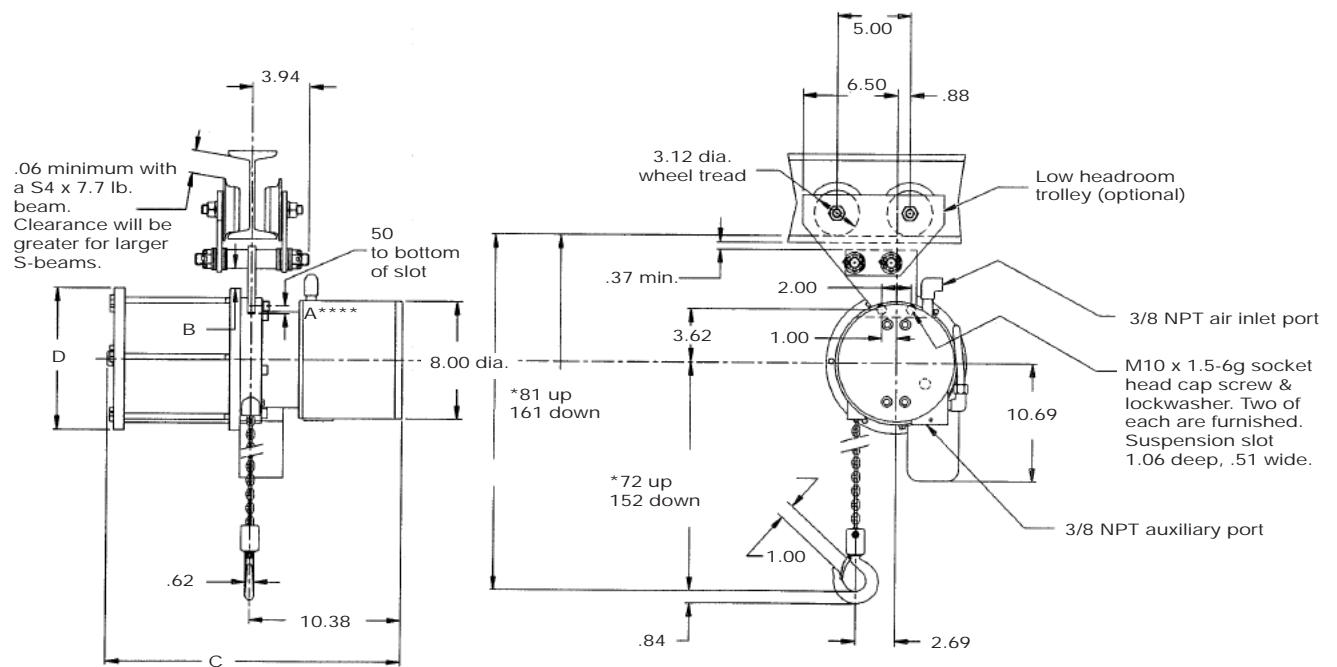
Product code	Rated capacity* (lbs.)	Control options	Working range (in.)**	Reach (in.)†	Net weight (lbs.)††
0950	120	Pendant control	80	144	60
0953	120	Balance control	80	144	60
0951	200	Pendant control	80	144	68
0954	200	Balance control	80	144	68
0952	300	Pendant control	80	144	86
0955	300	Balance control	80	144	86
0943	500	Pendant control	80	144	98
0947	120	Dual balance	80	144	60
0948	200	Dual balance	80	144	68
0949	300	Dual balance	80	144	86
0944	120	Pendant control	130	144	60
0945	200	Pendant control	130	144	68
0946	300	Pendant control	130	144	86

** Working range: Vertical lift from the hook in the lowest position to the hook in the highest position.

† Reach: Vertical distance from the bottom of the balancer to the hook in the lowest position. Actual reach may be adjusted at installation and under no circumstances should it be less than 84 inches.

†† Weights listed are for units with pendant controls and do not include the low headroom trolley or suspension plate.
For units with balance control, reduce the listed weights by 4 lbs.

Max air balancer



Max clearance dimensions (in.)

Rated capacity** (lbs.)	A**** headroom (in.)	B (in.)	C (in.)	D diameter (in.)
120	18.85	2.00	20.33	7.75
200	18.85	1.38	20.33	9.63
300	18.85	.38	20.45	11.63
500	18.85	.38	31.00	11.63
120 extended lift***	18.85	2.00	26.70	7.75
200 extended lift***	18.85	1.38	26.70	9.63
300 extended lift***	18.85	.38	27.70	11.63

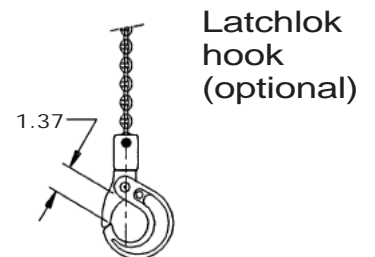
Note: Dimensions are in inches. Double reeved units available in all models except 500 lb. Double reeving does not change down dimension as supplied; it doubles the capacity of the unit, and decreases vertical travel by half.

* Nominal dimension based on the standard length of chain supplied with the CM Max. The chain may be shortened by the customer.

** 90 psi air input is required to operate at the rated capacity.

*** Extended lift provides 130" of lift.

**** Headroom with chain shortened to minimum allowed in up position and with optional low headroom trolley as shown. Headroom will be 2.5" longer with optional double reeve. To get the down dimension add 80" to the up dimension for the standard max and 130" for the extended lift (add half of this dimension for double reeved). Headroom may vary depending on mounting bracket and truck used.



*** ⚠ WARNING**

Overloading and improper use can result in injury.

To avoid injury:

- Do not exceed working load limit, load rating capacity
- Do not use to lift people or loads over people.
- use only alloy chain for overhead lifting.
- Read and follow all instructions.

TMM-140 Air Manipulator Hoist



300 Lb./140Kg Air Manipulator Hoist

The CM TMM-140 is ideal for workstation applications. Lightweight and portable, the unit weighs less than 20 pounds and operates at 100% (A5) duty cycle.

- Smooth operator - Efficient rotary vane motor provides high uniform torque for quick response, and smooth, quiet operation.
- Easy to use - Handle-mounted pendant control for one-handed operation and load positioning.
- Variable speeds - Precise and infinite speed control for accurate load spotting.
- Wire rope design - Self-winding lifting cable stores conveniently inside unit.
- Suspension - Swivel top and bottom hooks with hook latches standard, for portability and quick installation.
- Disc brake - Secures load and eliminates drift when pendant is released.
- Note - A 3/8" NPT air filter-regulator-lubricator is needed for effective operation. Spark resistant features are not available.

Ideal Applications Include:

- Assembly lines
- Machine shops
- Cleaning and/or dipping operations
- Manufacturing plants
- Power generating stations
- Shipping departments
- Chemical facilities
- Fabricating shops
- Repetitive lifting applications
- Auto and truck repair
- Handling fixtures and dies

Specifications:

Capacity (lb.)	Model number	Product code	Std. lift (ft.)	Lift speeds (FPM)				Air consumption		Headroom (in.)	Housing dimen. (in.)			Max air pres. (psi)	Net wt. (lb.)
				Load (up)	No load (Down)	No load (up)	(Down)	(m ³ /min)	(ft ³ /min)		D	W	L		
300	TMM-140	17050W	6' 6"	36	59	49	39	0.6	2 1/2	22 3/4	7 2/3	7 7/8	23 3/4	70-95	18.7

* WARNING

Overloading and improper use can result in injury.

To avoid injury:

- Do not exceed working load limit, load rating capacity
- Do not use to lift people or loads over people.
- Use only alloy chain for overhead lifting.
- Read and follow all instructions.

Cyclone hand chain hoist

One of the most popular and reliable hoists ever designed, the Cyclone combines superior engineering, efficiency and durability. Available in a variety of capacities from 1/4 ton to 10 tons, Cyclone features:



- Most interchangeability of parts in the industry
- Standard Load Limiter for simple, automatic overload protection
- Enclosed contoured Weston-type automatic brake for positive load control
- High-efficiency spur gearing for greater lift with minimum effort
- Rugged Hoistalloy chain for added strength and durability
- Fully machined, forged liftwheel pockets for easier lifting and smooth free chaining
- High-strength aluminum alloy castings in frame and covers
- Inspected over 75 times to meet or exceed HMI and ASME/ANSI performance and safety standards
- Standard hand chain drop is 2 feet less than lift, (example: 8 foot lift hoist has 6 foot hand chain drop)
- Lifetime warranty
- Metric rated
- Made in U.S.A.
- Options Include
 - Fabric chain bags
 - Metal chain containers
 - Zinc-plated load and hand chain
 - Unwelded hand chain
 - Latchlok hooks
 - Bronze hooks
 - Bullard hooks
 - Eye-type suspension

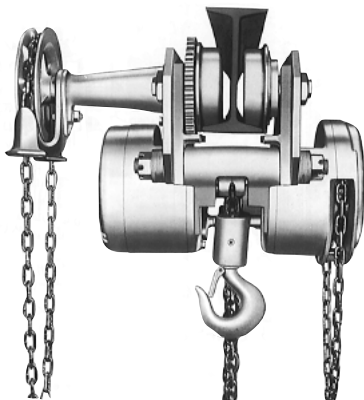


Fabric chain bag

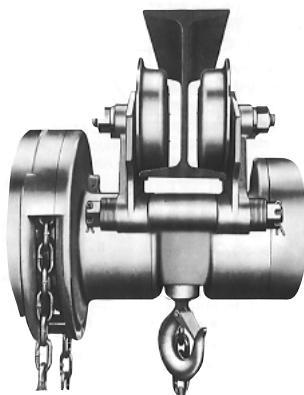


Metal chain container

Geared trolley



Plain trolley



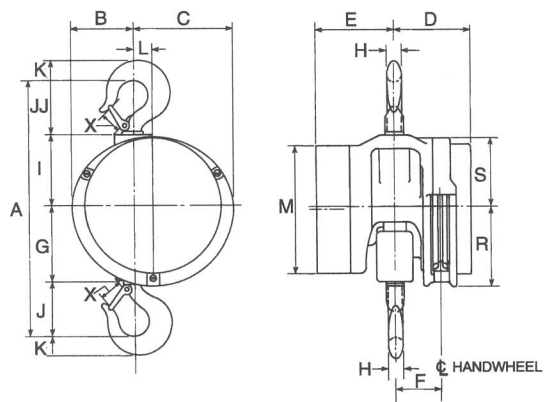
* ⚠ WARNING

Overloading and improper use can result in injury.

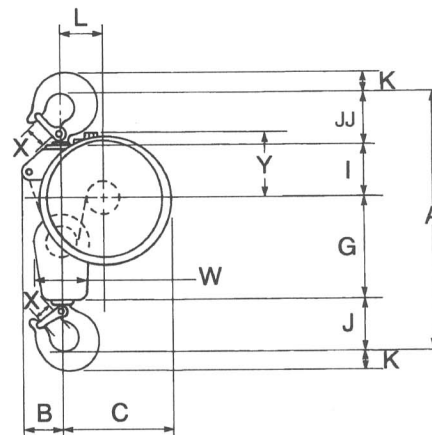
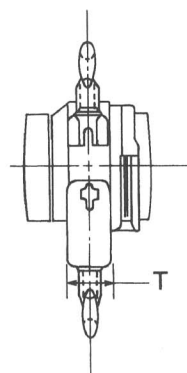
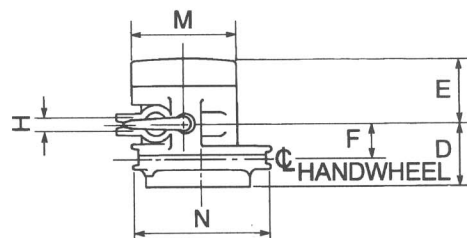
To avoid injury:

- Do not exceed working load limit, load rating capacity
- Do not use to lift people or loads over people.
- Use only alloy chain for overhead lifting.
- Read and follow all instructions.

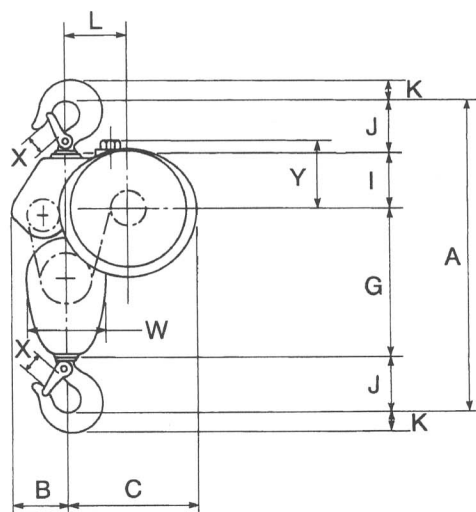
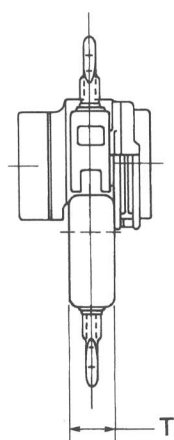
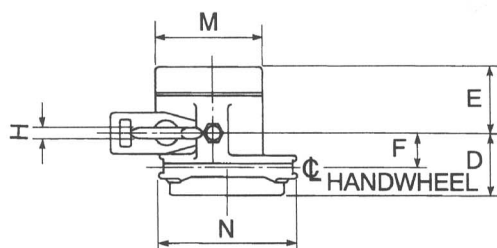
Cyclone hand chain hoist



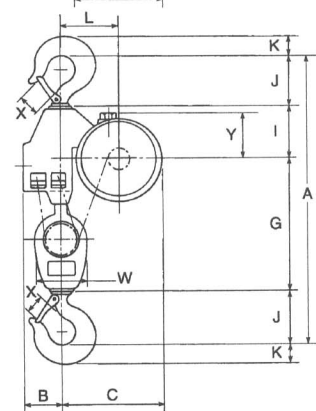
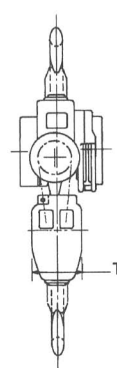
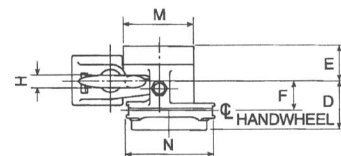
1/4 - 2 ton



3 - 4 ton



5 - 6 ton



8 - 10 ton

Cyclone hand chain hoist

Specifications

Rated capacity* (tons)	Product code	Standard lift† (ft.)	Reeving	Minimum distance between hooks (in.)	Chain overhauled to lift load one foot (ft.)	Chain pull to lift full load (lbs.)	Shipping weight (lbs.)
1/4	4621	8	1	12 ⁷ / ₈	22 ¹ / ₂	23	37
1/2	4622	8	1	12 ⁷ / ₈	22 ¹ / ₂	46	37
1	4624	8	1	14	30	69	40
1 1/2	4625	8	1	17 ⁵ / ₁₆	40 ¹ / ₂	80	65
2	4626	8	1	17 ⁵ / ₁₆	52	83	64
3	4627	8	2	21 ¹ / ₂	81	85	96
4	4628	8	2	21 ¹ / ₂	104	88	96
5	4629	8	3	24 ¹ / ₄	156	75	128
6	4630	8	3	25 ¹ / ₄	156	90	132
8	4631	8	4	34 ¹ / ₂	208	89	235
10	4632	8	5	35 ¹ / ₂	260	95	249

† Can be supplied with longer lifts

Clearance dimensions (in.)

Dimension	Rated capacity* (tons)								
	1/4	1/2	1	1 1/2 & 2	3 & 4	5	6	8	10
A	12 ⁷ / ₈	12 ⁷ / ₈	14	17 ⁵ / ₁₆	21 ¹ / ₂	24 ¹ / ₄	25 ¹ / ₄	34 ¹ / ₂	35 ¹ / ₂
B	3 ¹¹ / ₁₆	3 ¹¹ / ₁₆	3 ¹¹ / ₁₆	4 ³ / ₁₆	3 ⁵ / ₁₆	4 ³ / ₁₆	4 ³ / ₁₆	4 ³ / ₄	4 ³ / ₄
C	7 ³ / ₁₆	7 ³ / ₁₆	7 ³ / ₁₆	6 ¹¹ / ₁₆	8 ¹⁵ / ₁₆	10 ⁵ / ₁₆	10 ⁵ / ₁₆	12 ³ / ₄	12 ³ / ₄
D	4 ¹ / ₈	4 ¹ / ₈	4 ¹ / ₈	5 ¹ / ₁₆	5 ¹ / ₁₆	4 ⁷ / ₈	4 ⁷ / ₈	5 ¹³ / ₁₆	5 ¹³ / ₁₆
E	3 ¹ / ₄	3 ¹ / ₄	3 ¹ / ₄	4 ¹³ / ₁₆	4 ¹³ / ₁₆	5	5	4 ¹ / ₁₆	4 ¹ / ₁₆
F	2 ¹ / ₁₆	2 ¹ / ₁₆	2 ¹ / ₁₆	3 ¹ / ₈	3	2 ¹⁵ / ₁₆	2 ¹⁵ / ₁₆	3 ³ / ₄	3 ³ / ₄
G	3 ⁷ / ₈	3 ⁷ / ₈	3 ³ / ₄	5 ³ / ₁₆	8 ¹ / ₄	11 ¹³ / ₁₆	11 ¹³ / ₁₆	17 ³ / ₁₆	17 ³ / ₁₆
H	1 ¹ / ₁₆	1 ¹ / ₁₆	1 ³ / ₁₆	1 ¹ / ₈	1 ¹ / ₄	1 ¹ / ₄	1 ³ / ₈	1 ¹¹ / ₁₆	1 ¹³ / ₁₆
I	3 ³ / ₄	3 ³ / ₄	3 ³ / ₄	4 ¹³ / ₁₆	4 ¹ / ₄	4 ³ / ₁₆	4 ³ / ₁₆	6 ¹ / ₁₆	6 ¹ / ₁₆
J	2 ⁵ / ₈	2 ⁵ / ₈	2 ¹⁵ / ₁₆	3 ⁵ / ₈	4 ¹ / ₈	4 ¹ / ₈	4 ⁵ / ₈	5 ⁵ / ₈	6 ¹ / ₈
JJ	2 ⁵ / ₈	2 ⁵ / ₈	3 ⁹ / ₁₆	3 ¹¹ / ₁₆	4 ⁷ / ₈	—	—	—	—
K	1 ⁵ / ₁₆	1 ⁵ / ₁₆	1 ¹ / ₈	1 ¹ / ₂	1 ¹¹ / ₁₆	1 ¹¹ / ₁₆	1 ⁷ / ₈	2 ¹ / ₄	2 ⁹ / ₁₆
L	1 ³ / ₄	1 ³ / ₄	1 ³ / ₄	1 ¹ / ₄	3 ¹ / ₂	4 ⁷ / ₈	4 ⁷ / ₈	7 ⁵ / ₁₆	7 ⁵ / ₁₆
M	7 ¹ / ₁₆	7 ¹ / ₁₆	7 ¹ / ₁₆	8 ⁵ / ₈	8 ⁵ / ₈	8 ⁵ / ₈	8 ⁵ / ₈	8 ⁵ / ₈	8 ⁵ / ₈
N	—	—	—	—	10 ⁷ / ₈	10 ⁷ / ₈	10 ⁷ / ₈	10 ⁷ / ₈	10 ⁷ / ₈
R	5 ⁷ / ₁₆	5 ⁷ / ₁₆	5 ⁷ / ₁₆	5 ⁷ / ₁₆	—	—	—	—	—
S	4 ¹¹ / ₁₆	4 ¹¹ / ₁₆	4 ¹¹ / ₁₆	4 ¹¹ / ₁₆	—	—	—	—	—
T	—	—	—	—	3 ⁷ / ₈	4	4	6 ³ / ₈	6 ³ / ₈
W	—	—	—	—	4 ¹ / ₂	6 ¹ / ₄	6 ¹ / ₄	6 ⁷ / ₁₆	6 ⁷ / ₁₆
X	1 ¹ / ₃₂	1 ¹ / ₃₂	1 ¹ / ₈	1 ⁵ / ₁₆	1 ⁵ / ₈	1 ⁵ / ₈	1 ³ / ₄	2 ¹ / ₁₆	2 ⁵ / ₁₆
Y	—	—	—	—	5 ¹ / ₈	5 ⁷ / ₈	5 ⁷ / ₈	5 ⁹ / ₁₆	5 ⁹ / ₁₆

* ⚠ WARNING

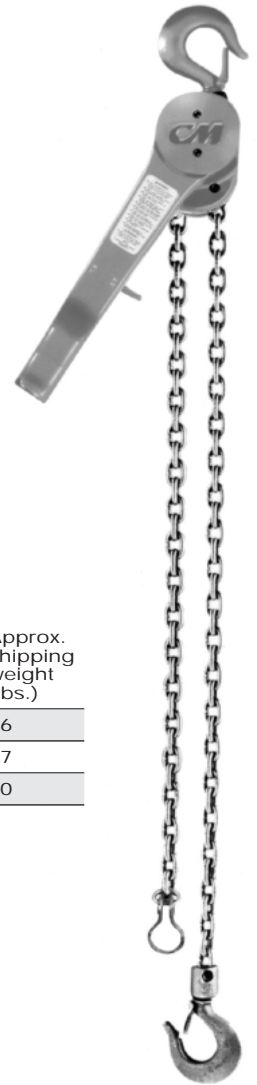
Overloading and improper use can result in injury.

To avoid injury:

- Do not exceed working load limit, load rating capacity
- Do not use to lift people or loads over people.
- use only alloy chain for overhead lifting.
- Read and follow all instructions.

Short handle puller

- Easy one-hand operation
- Lever pull range is 45 to 62 pounds to lift full load
- Handle that rotates 360°, making it easy to operate in any position and in small spaces
- Tough yet lightweight aluminum construction and powder coat finish
- Hoistaloy hardened steel load chain for strength, long wear life and flexibility
- Free chaining for fast, easy attachment to load
- Forged upper and lower hooks with latches
- Simple construction with fewer parts for ease of maintenance
- Optional Load Limiter device protects against overload
- Lifetime warranty
- Made in U.S.A.



Specifications - Short handle puller

Rated capacity* (tons)	Product code	Standard lift (ft.)	Pull to lift full loads (lbs.)	Minimum distance between hooks (in.)	Lever length (in.)	Reeving	Hook throat openings (in.)	Approx. shipping weight (lbs.)
3/4	7300P	5	45	12 1/4	12	1	1 1/32	16
1 1/2	7320P	5	55	14 3/4	16 3/4	1	1 1/8	27
3	7330P	5	62	17 5/8	16 3/4	2	1 3/16	40

Specifications - Short handle puller without chain

Rated capacity* (tons)	Product code	Approx. shipping weight (lbs.)
3/4	7301P	12
1 1/2	7321P	21
3	7331P	28



Optional Load Limiter



Optional upper Latchlok Hook
3/4 – 1 1/2 ton

Optional kits

	Product code	Approx. shipping weight (lbs.)	Rated capacity* (tons)
Load Limiter	7310P	1	3/4
	7311P	2	1 1/2-3
Anchor Sling	7309P	2	3/4
	7312P	3	1 1/2
Latchlok Hook	1001	2	3/4
	upper 1003	2	1 1/2
	1004	3	3
	lower 1001	2	3/4
	1003	2	1 1/2
	1005	3	3



Optional upper Latchlok Hook
3 ton



Optional anchor sling



Professional Lever Hoists (disc brake)

- 50% wider hardened ratchet gear
- Grade 100 alloy chain for more strength with less weight
- Chain guide system allows for horizontal operation
- High impact resistant gear case and brake cover
- Precision Bearings
- Disc Brake
- Braking capacity is 4 times rated capacity
- Manufactured to ISO-9002 quality standard
- Triple chain guide for consistent up and down FREE WHEELING with one hand



MODEL NUMBER	CAPACITY (POUNDS)	STANDARD LIFT (FEET)	MINIMUM DISTANCE BETWEEN HOOKS	HANDLE LENGTH	NET WT. (POUNDS)
PLH-15-5	1,500	5	11"	11"	15
PLH-15-10	1,500	10	11"	11"	18
PLH-15-20	1,500	20	11"	11"	22
PLH-30-5	3,000	5	15-1/2"	16"	23
PLH-30-10	3,000	10	15-1/2"	16"	27
PLH-30-20	3,000	20	15-1/2"	16"	35
PLH-60-5	6,000	5	22-7/16"	16"	35
PLH-60-10	6,000	10	22-7/16"	16"	42
PLH-60-20	6,000	20	22-7/16"	16"	49



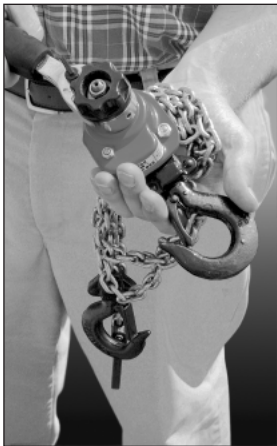
Each unit comes standard with a rugged storage bag. Additional bags are available, model BAG-12

PROFESSIONAL LEVER HOIST
series PLH

CM Series 602 mini ratchet lever hoist

This Mini-but-Mighty Hoist Lifts Up To 550 Lbs. Easy Toolbox Storage

The CM Series 602 mini hoist is the most compact ratchet lever hoist in the market.



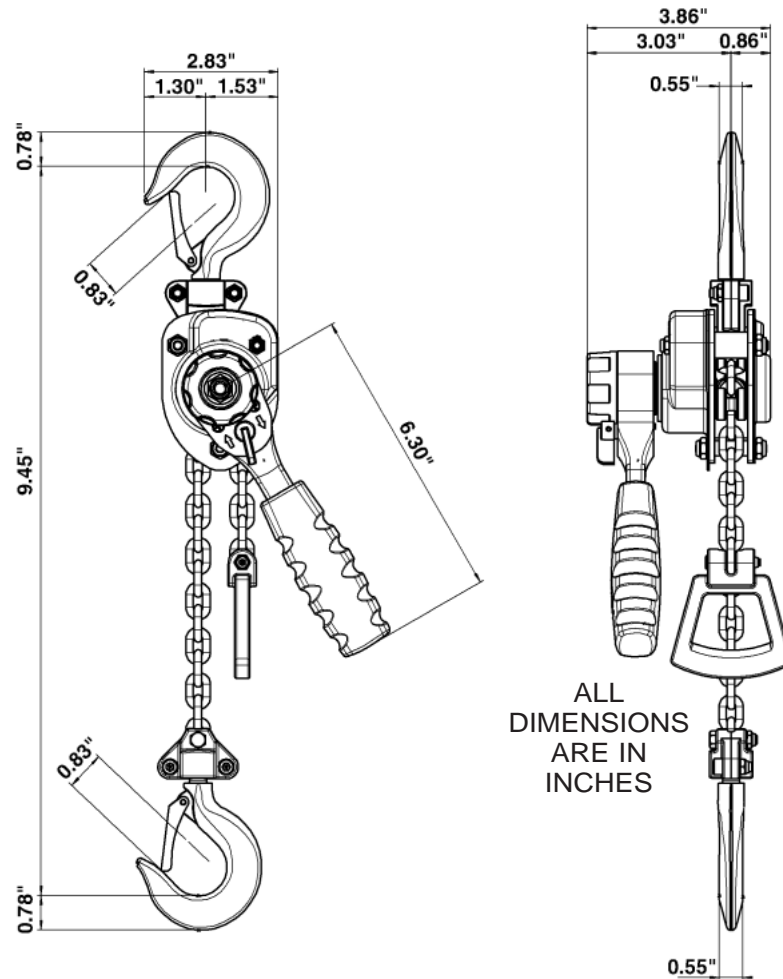
Convenient Carry Bag -
Product Code # 0212

- Plated load chain is standard.
- Weston type load brake.
- Rubber grip for better comfort and security.
- Lightweight design weighs only 5 lbs. for ease of operation and portability. Use in confined conditions with one hand operation.
- Forged upper and lower hooks with latches standard.



- Impact resistant all-steel frame, gear case and cover
- Hardened link type steel load chain for strength and long wear.
- Free chaining feature serves to quickly attach the load.
- Conforms with ASME B30.21.
- Standard five-ft. lift. Units with ten-ft. lift available - Product Code # 0214

Series 602 mini ratchet lever hoist



Product code #	0210
Capacity	550 lbs.
Standard lift	5 ft.
Number of chain parts	1
Chain dimensions d x t (in inches)	16 x .47
Lift with one full lever turn	3.15 in.
Handle pull at W.L.L.	58.0 lbs.
Weight with standard lift	5.0 lbs.

*** ⚠ WARNING**

Overloading and improper use can result in injury.

To avoid injury:

- Do not exceed working load limit, load rating capacity
- Do not use to lift people or loads over people.
- use only alloy chain for overhead lifting.
- Read and follow all instructions.

Series 653

Lever operated hoist

Ideal for construction and industrial applications

The Series 653 lever operated hoist is a high quality, rugged, steel tool for close quarter pulling, stretching, and hoisting applications. Its characteristic short handle, along with minimal lever pull effort, make this tool ideal for a broad range of applications.

- Capacities from 3/4 to 3 tons
- Impact resistant, stamped steel frame, gear case and cover for durability and light weight.
- Powder coated finish for added corrosion protection.
- Hardened steel load sharing gears.
- Double pawl arrangement for assured load control.
- Two chain guide rollers for positive chain engagement.
- Weston type braking system for positive load control and positioning.
- Simple one-handed, free chaining for fast load attachment.
- Hardened steel chain for strength and long wear life.
- Forged upper and lower hooks with heavy cast steel latches.
- Rubber handle grip for added operator comfort.
- Minimal maintenance with no special tools required.
- 5-year warranty against defects in materials and workmanship.
- Metric rated.
- Meets ASME B30.21 – Manually Lever Operated Hoist Standard and European CE Standard.
- Designed and manufactured by Columbus McKinnon Corporation.

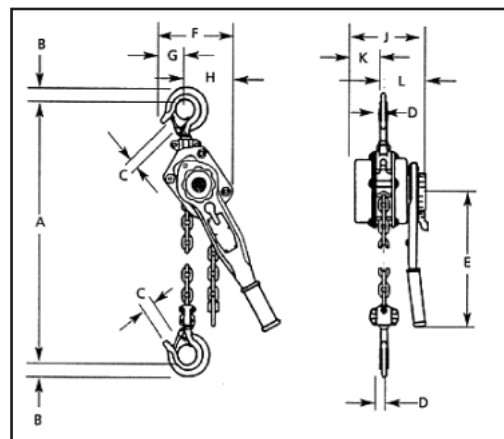


★ WARNING

Overloading and improper use can result in injury.

To avoid injury:

- Do not exceed working load limit, load rating capacity
- Do not use to lift people or loads over people.
- use only alloy chain for overhead lifting.
- Read and follow all instructions.



Specifications

Product code	Load rating (tonnes)	Lift or reach (ft.)	Lever pull to lift rated load (lbs.)	Approx. ship wt. (lbs.)	A	B	C	D	E	F	G	H	J	K	L
5310	3/4	5	33	15.0	12 ⁵ / ₈	15/16	1 ¹ / ₈	11/16	11	4 ³ / ₈	2 ³ / ₁₆	2 ³ / ₁₆	5 ¹⁵ / ₁₆	2 ³ / ₈	3 ⁹ / ₁₆
5311	3/4	10	33	15.8	12 ⁵ / ₈	15/16	1 ¹ / ₈	11/16	11	4 ³ / ₈	2 ³ / ₁₆	2 ³ / ₁₆	5 ¹⁵ / ₁₆	2 ³ / ₈	3 ⁹ / ₁₆
5312	3/4	15	33	16.6	12 ⁵ / ₈	15/16	1 ¹ / ₈	11/16	11	4 ³ / ₈	2 ³ / ₁₆	2 ³ / ₁₆	5 ¹⁵ / ₁₆	2 ³ / ₈	3 ⁹ / ₁₆
5313	3/4	20	33	17.3	12 ⁵ / ₈	15/16	1 ¹ / ₈	11/16	11	4 ³ / ₈	2 ³ / ₁₆	2 ³ / ₁₆	5 ¹⁵ / ₁₆	2 ³ / ₈	3 ⁹ / ₁₆
5328	1	5	44	15.0	12 ⁵ / ₈	15/16	1 ¹ / ₈	11/16	11	4 ³ / ₈	2 ³ / ₁₆	2 ³ / ₁₆	5 ¹⁵ / ₁₆	2 ³ / ₈	3 ⁹ / ₁₆
5315	1 ¹ / ₂	5	51	27.0	14 ³ / ₁₆	1 ¹ / ₈	1 ¹ / ₄	13/16	16 ¹ / ₄	4 ³ / ₈	2 ³ / ₈	2 ³ / ₈	6 ⁷ / ₈	3	3 ¹⁵ / ₁₆
5316	1 ¹ / ₂	10	51	31.4	14 ³ / ₁₆	1 ¹ / ₈	1 ¹ / ₄	13/16	16 ¹ / ₄	4 ³ / ₈	2 ³ / ₈	2 ³ / ₈	6 ⁷ / ₈	3	3 ¹⁵ / ₁₆
5317	1 ¹ / ₂	15	51	35.8	14 ³ / ₁₆	1 ¹ / ₈	1 ¹ / ₄	13/16	16 ¹ / ₄	4 ³ / ₈	2 ³ / ₈	2 ³ / ₈	6 ⁷ / ₈	3	3 ¹⁵ / ₁₆
5318	1 ¹ / ₂	20	51	40.2	14 ³ / ₁₆	1 ¹ / ₈	1 ¹ / ₄	13/16	16 ¹ / ₄	4 ³ / ₈	2 ³ / ₈	2 ³ / ₈	6 ⁷ / ₈	3	3 ¹⁵ / ₁₆
5329	2	5	68	27.0	14 ¹³ / ₁₆	1 ¹ / ₈	1 ¹ / ₄	13/16	16 ¹ / ₄	4 ³ / ₈	2 ³ / ₈	2 ³ / ₈	6 ⁷ / ₈	3	3 ¹⁵ / ₁₆
5320	3	5	77	45.0	18 ¹¹ / ₁₆	1 ¹³ / ₁₆	1 ⁹ / ₁₆	1 ¹ / ₄	16 ¹ / ₄	7 ¹ / ₂	3 ³ / ₈	4 ³ / ₁₆	7 ⁷ / ₈	3 ³ / ₈	4 ⁹ / ₁₆
5321	3	10	77	52.3	18 ¹¹ / ₁₆	1 ¹³ / ₁₆	1 ⁹ / ₁₆	1 ¹ / ₄	16 ¹ / ₄	7 ¹ / ₂	3 ³ / ₈	4 ³ / ₁₆	7 ⁷ / ₈	3 ³ / ₈	4 ⁹ / ₁₆

Puller

The CM Puller is designed for heavy-duty construction and industrial applications. Used to pull, lift, drag or stretch, it features:

- Tough aluminum alloy construction and powder coat finish
- Weatherproof for outdoor service
- Simple construction with fewer parts for ease of maintenance and lower inventories
- Hoist alloy hardened steel link type load chain for strength, long wear life and flexibility
- Weatherized Weston-type automatic braking system for positive load control
- Easy, one-hand operation and control — only 58 pounds of pull required for $\frac{3}{4}$ ton model capacity
- Forged upper and lower hooks with latches standard
- Free wheeling for fast and easy attachment to load
- Upper and lower Latchlok hooks available for all capacities
- Optional Load Limiter protection device stops transmission of lever forces protecting against dangerous overload
- Optional anchor sling simplifies attachment to allow anchor hook to swivel in tight space applications ($\frac{3}{4}$ & $1\frac{1}{2}$ ton units only)
- Optional Load Sentry warns of overload condition
- Optional shorter lever for $\frac{3}{4}$ and $1\frac{1}{2}$ ton units available
- Optional zinc-plated chain available
- Unlimited lift
- Lifetime warranty
- Metric rated
- Made in U.S.A.



Optional Load Limiter



Optional anchor sling ($\frac{3}{4}$ and $1\frac{1}{2}$ ton)



Latchlok type hook



Optional shorter lever

Puller specifications - standard unit

Rated capacity* (tons)	Product code	Standard lift† (ft.)	Pull to lift full loads (lbs.)	Minimum distance between hooks (in.)	Lever length (in.)	Reeving	Hook throat openings (in.)	Approx. shipping weight (lbs.)
$\frac{3}{4}$	4043	5	58	$10\frac{3}{4}$	$21\frac{1}{4}$	1	$1\frac{1}{32}$	16
$1\frac{1}{2}$	4045	5	89	$14\frac{1}{4}$	$21\frac{1}{4}$	1	$1\frac{1}{8}$	26
3	4047	5	95	$16\frac{15}{16}$	$21\frac{1}{4}$	2	$1\frac{7}{32}$	38
6	4050	5	96	$21\frac{3}{8}$	$21\frac{1}{4}$	4	$1\frac{3}{4}$	73

† Can be supplied with lifts longer than 5 feet

Optional kits

Rated capacity* (tons)	Load Limiter		Load Sentry kit			Anchor sling kit	
	Product code	Approx. shipping weight (lbs.)	Product code	Lever length (in.)	Approx. shipping weight (lbs.)	Product code	Approx. shipping weight (lbs.)
$\frac{3}{4}$	4190	$8\frac{1}{4}$	4096	$23\frac{3}{4}$	$4\frac{1}{2}$	4071	2
$1\frac{1}{2}$	4191	$8\frac{1}{4}$	4098	$23\frac{3}{4}$	$4\frac{1}{2}$	4072	$4\frac{3}{4}$
3	4191	$8\frac{1}{4}$	4098	$23\frac{3}{4}$	$4\frac{1}{2}$	—	—
6	4191	$8\frac{1}{4}$	4098	$23\frac{3}{4}$	$4\frac{1}{2}$	—	—

ShopStar electric chain hoist



The ShopStar electric chain hoist features rugged construction and high H4 duty cycle. It keeps lifting and lifting, up to 1,000 pounds and 300 motor starts per hour. Additional features and benefits include:

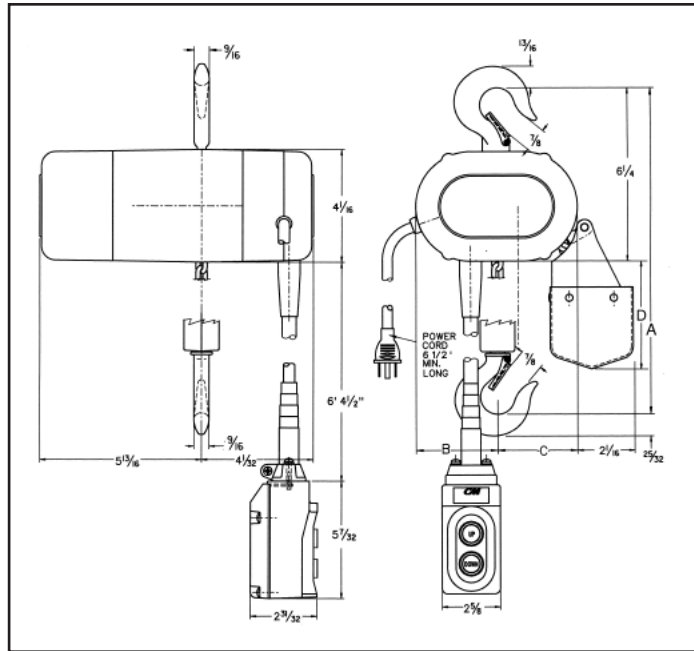
- H4 duty cycle (300 motor starts/hour)
- Easy installation and maintenance
- Standard protector overload device
- 10 pocket oblique lay liftwheel provides longer chain wear
- Epoxy powder coat finish
- 6½ ft. power cord with molded 3 prong plug on 115 volt units
- NEMA 4 industrial rated control station
- Optional impact-resistant chain container available
- Gear train lifetime lubricated with non-oxidizing grease
- CM Hoist Alloy Load Chain (zinc plated optional)
- Thermally protected hoist duty motor
- Dual braking system — D.C. plus regenerative
- Rugged cast aluminum alloy hoist frame
- 5:1 design factor
- Small, compact design for commercial & industrial applications
- Rigid hook suspension prevents tangling of power cord
- Hardened forged steel latch style lower hook rotates 360°
- Totally enclosed non-ventilated hoist frame protects motor from environmental contamination
- True vertical lift
- Precision bearings used throughout hoist
- Lifetime warranty
- Made in U.S.A.

* **WARNING**

Overloading and improper use can result in injury.

To avoid injury:

- Do not exceed working load limit, load rating capacity
- Do not use to lift people or loads over people.
- Use only alloy chain for overhead lifting.
- Read and follow all instructions.



Clearance dimensions (in.)

Reeving	A	B	C	D
Single	11 ¹ / ₁₆	3	2 ¹⁵ / ₁₆	3 ⁷ / ₈
Double	11 ¹⁵ / ₁₆	3 ⁹ / ₁₆	2 ³ / ₈	5 ³ / ₄

Product code	Single reeved	Double reeved	Approx. Shipping wt., lbs.
2063	10	5	1
2064	20	10	1.4
2065	40	20	1.4
2066	80	40	1.4
2067	120	60	2.2

Specifications

Product Code				Max. capacity lbs.	Lifting speed F.P.M.	Reeving	Lift ft.	Approx. shipping wt., (lbs.)	Motor H.P.
115-1-60	230-1-60	230-3-60	460-3-60						
2070	—	—	—	250	16	single	10	26	1/6
—	2069	2071	2072	250	16	single	10	28	1/6
—	—	2076	2077	250	24	single	10	28	1/6
—	—	2081	2082	250	40	single	10	28	1/6
2000	—	—	—	300	16	single	10	26	1/6
—	2047	2026	2029	300	16	single	10	28	1/6
—	—	2086	2087	300	24	single	10	28	1/6
—	—	2074	2075	300	40	single	10	28	1/6
2095	—	—	—	500	8	double	10	32	1/6
—	2094	2096	2097	500	8	double	10	34	1/6
2090	—	—	—	500	12	single	10	26	1/6
—	2089	2091	2092	500	12	single	10	28	1/6
—	—	2080	2084	500	16	single	10	28	1/6
—	—	2101	2102	500	20	double	10	34	1/6
—	—	2099	2100	500	24	single	10	28	1/6
2001	—	—	—	600	8	double	10	32	1/6
—	2048	2035	2038	600	8	double	10	34	1/6
—	—	2106	2107	600	12	double	10	34	1/6
—	—	2105	2114	600	20	double	10	34	1/6
2110	—	—	—	1000	6	double	10	32	1/6
—	2109	2111	2112	1000	6	double	10	34	1/6
—	—	2116	2117	1000	8	double	10	32	1/6
—	—	2119	2121	1000	12	double	10	32	1/6

Lodestar electric chain hoist

The balanced, integrated, proven design of the Lodestar has made it the most popular electric chain hoist in the industry. Lodestar gives you more value for your money including:

- Up to 3 ton capacities for heavy-duty industrial applications
- Gear train lifetime lubricated with non-oxidizing grease
- Precision machined and hardened liftwheel with hardened chain guides for precise chain liftwheel fit
- Gearing designed for exceptionally long life and quiet operation
- H4 duty standard
- Rugged control station (NEMA 4)
- Hoist duty motor, standard Protector overload device and standard screw type limit switches
- Designed for greater productivity, efficiency and economy
- Hardened, forged steel, latch type hooks and Hoistaloy load chain for long, dependable service
- Easy to install and maintain
- No special tools required to disassemble
- High reliability and long life
- Lifetime warranty
- Each hoist thoroughly inspected and tested to over 125% of rated load prior to shipment
- Meets ASME B30.16
- Metric rated
- Made in U.S.A.



Special applications

- Harsh environment hoists available for severe duty of plating, galvanizing and washdown applications
- Hoists with climbing capability available for temporary rigging or lifting applications — must be used in inverted position only
- Hoists with creep control allow precise positioning through field adjustment within the time delay range of .05 sec. to 3 sec.
- Articulating suspension 3 ton only

Specifications — two speed

Rated capacity* (tons)	Standard lift (ft.)	Lift speed (F.P.M.)	Motor H.P.	Model	Reeving	Product code† less suspension		Approximate shipping weight (lbs.)
						230-3-60	460-3-60	
1/8	10	10/32	1/4	A2	1	2707	2708	70
	10	20/60	1/2	AA2	1	2717	2718	74
1/4	10	5/16	1/4	B2	1	2727	2728	70
	10	10/32	1/2	C2	1	2737	2738	74
1/2	10	2.5/8	1/4	E2	2	2747	2748	79
	10	5/16	1/2	F2	1	2757	2758	74
	10	10/32	1	J2	1	3502	3503	116
	10	21/64	2	JJ2	1	3549	3550	130
1	10	2.5/8	1/2	H2	2	2767	2768	83
	10	5/16	1	L2	1	3504	3505	116
	10	10/32	2	LL2	1	3553	3554	130
2	10	2.5/8	1	R2	2	3506	3507	136
	10	5/16	2	RR2	2	3561	3562	150
3	10	1.75/5.5	1	RT2	3	9511	9513	161
	10	3.5/11	2	RRT2	3	9512	9514	175

†Specify voltage 230 or 460

Lodestar electric chain hoist

Specifications — single speed

Rated capacity* (tons)	Standard lift (ft.)	Lift speed (F.P.M.)	Motor H.P.	Model	Reeving	Product code† less suspension		Approximate shipping weight (lbs.)
						115-1-60	230/460-3-60	
1/8	10	32	1/4	A	1	2702	2705	60
	10	60	1/2	AA	1	2712	2715	66
	15	32	1/4	A	1	3101	3103	64
	15	60	1/2	AA	1	3111	3113	70
	20	32	1/4	A	1	3102	3104	68
	20	60	1/2	AA	1	3112	3114	74
1/4	10	16	1/4	B	1	2722	2725	60
	10	32	1/2	C	1	2732	2735	66
	15	16	1/4	B	1	3121	3123	64
	15	32	1/2	C	1	3131	3133	70
	20	16	1/4	B	1	3122	3124	68
	20	32	1/2	C	1	3132	3134	74
1/2	10	8	1/4	E	2	2742	2745	69
	10	16	1/2	F	1	2752	2755	66
	10	32	1	J	1	3512	3515	110
	10	64	2	JJ	1	—	3545	117
	15	8	1/4	E	2	3141	3143	76
	15	16	1/2	F	1	3151	3153	70
	15	32	1	J	1	4212	4214	116
	15	64	2	JJ	1	—	4244	123
	20	8	1/4	E	2	3142	3144	83
	20	16	1/2	F	1	3152	3154	74
	20	32	1	J	1	4213	4215	121
	20	64	2	JJ	1	—	4245	128
1	10	8	1/2	H	2	2762	2765	75
	10	16	1	L	1	3522	3525	110
	10	32	2	LL	1	—	3555	117
	15	8	1/2	H	2	3161	3163	82
	15	16	1	L	1	4222	4224	116
	15	32	2	LL	1	—	4254	123
	20	8	1/2	H	2	3162	3164	89
	20	16	1	L	1	4223	4225	121
	20	32	2	LL	1	—	4255	128
2	10	8	1	R	2	3532	3535	130
	10	16	2	RR	2	—	3565	137
	15	8	1	R	2	4232	4234	140
	15	16	2	RR	2	—	4264	147
	20	8	1	R	2	4233	4235	150
	20	16	2	RR	2	—	4265	157
3	10	5.5	1	RT	3	9501	9505	155
	10	11	2	RRT	3	—	9508	162
	15	5.5	1	RT	3	9502	9506	169
	15	11	2	RRT	3	—	9509	176
	20	5.5	1	RT	3	9503	9507	183
	20	11	2	RRT	3	—	9510	190

†Single speed hoist factory wired 460V, convertible to 230V.

Lodestar with hook suspension

Clearance dimensions (in.)

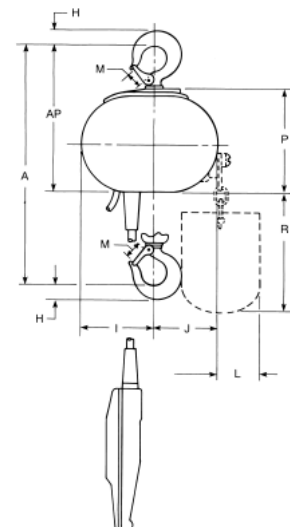
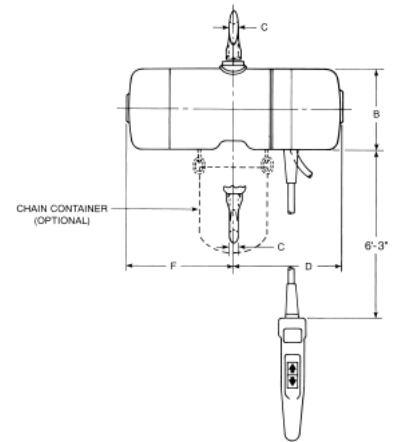
Dimension	Lodestar models					
	A,B,C,F and AA	E and H	J, L, JJ and LL	R	RR	RT and RRT
A	16 ¹ / ₄	19 ⁵ / ₈	18 ⁹ / ₁₆	24 ¹ / ₈	24 ¹ / ₈	29 ⁹ / ₁₆
B	6 ¹ / ₈	6 ¹ / ₈	7 ⁵ / ₈	7 ⁵ / ₈	7 ⁵ / ₈	7 ⁵ / ₈
C	1 ¹ / ₁₆	7 ⁷ / ₈	7 ⁷ / ₈	1 ¹ / ₈	1 ¹ / ₈	1 ¹ / ₈
D	11	11	9 ¹ / ₂	9 ¹ / ₂	9 ¹ / ₂	9 ¹ / ₂
F	7 ³ / ₄	7 ³ / ₄	10 ¹¹ / ₁₆	10 ¹¹ / ₁₆	10 ¹¹ / ₁₆	10 ¹¹ / ₁₆
H	1	1 ³ / ₁₆	1 ³ / ₁₆	1 ¹ / ₂	1 ¹ / ₂	1 ¹ / ₂
I	4 ¹³ / ₁₆	3 ⁷ / ₈	7 ¹ / ₄	6 ³ / ₁₆	6 ³ / ₁₆	6 ³ / ₁₆
J	3 ¹⁵ / ₁₆	4 ⁷ / ₈	5 ⁷ / ₁₆	6 ¹ / ₂	6 ¹ / ₂	6 ¹ / ₂
L	1 ¹¹ / ₁₆	1 ¹¹ / ₁₆	7 ⁷ / ₁₆	7 ⁷ / ₁₆	7 ⁷ / ₁₆	7 ⁷ / ₁₆
M	1	1 ¹ / ₈	1 ¹ / ₈	1 ⁵ / ₁₆	1 ⁵ / ₁₆	1 ⁵ / ₁₆
P	6 ⁵ / ₈	6 ⁹ / ₁₆	7 ¹³ / ₁₆	7 ¹³ / ₁₆	7 ¹³ / ₁₆	7 ¹³ / ₁₆
R*	9 ⁷ / ₈	12 ⁷ / ₈	12 ⁷ / ₈	18 ⁷ / ₈	18 ⁷ / ₈	24 ⁷ / ₈
AP	9 ¹ / ₄	9 ⁹ / ₁₆	10 ¹¹ / ₁₆	11 ³ / ₁₆	11 ³ / ₁₆	12 ⁹ / ₁₆

* Based on 10 ft. lift and increases proportionately with longer lifts

Suspension specifications

Type	Product code	Models
Swivel hook	2792	A-AA-B-C-F
Swivel hook	2793	E-H
Swivel hook	3661	J-L-JJ-LL
Swivel hook	3660	R-RR
Swivel hook	9557	RT-RRT
Swivel latchlok hook	2796	A-AA-B-C-F
Swivel latchlok hook	3662	J-L-JJ-LL
Swivel latchlok hook	3663	R-RR
Rigid lug for low head trolley	2778	A-AA-B-C-F
Rigid lug for low head trolley	2779	E-H
Rigid lug for low head trolley	3677	J-L-JJ-LL
Rigid lug for low head trolley	3668	R-RR
Rigid lug for low head trolley	9561	RT-RRT
Rigid hook	2788	A-AA-B-C-F
Rigid hook	2789	E-H
Rigid hook	3651	J-L-JJ-LL
Rigid hook	3658	R-RR
Rigid hook	9559	RT-RRT
Rigid latchlok hook	2790	A-AA-B-C-F
Rigid latchlok hook	3652	J-L-JJ-LL

Note: 3 ton lug suspension prevents hoist from rotating but allows hoist to articulate below trolley



★ ⚠ WARNING

Overloading and improper use can result in injury.

To avoid injury:

- Do not exceed working load limit, load rating capacity
- Do not use to lift people or loads over people.
- use only alloy chain for overhead lifting.
- Read and follow all instructions.

Lodestar with Series 635 low headroom trolley



Specifications For Series 635 Trolley

Std. range of adjust.
Am. standard S-beams

Rated capacity* (tons)	Product code	Models	Depth (in.)	Flange width (in.)	Tread diameter (in.)	Minimum radius curve (in.)	Approximate shipping weight (lbs.)
1/8 to 1	3575	A – LL	4 – 15	2 ⁵ / ₈ – 5 ⁵ / ₈	3 ¹ / ₈	24	22
2	3569	R – RR	6 – 18	3 ³ / ₈ – 6	4 ³ / ₄	24	52
3	9576	RT – RRT	8 – 15	4 – 5 ⁵ / ₈	4 ³ / ₄	30	58

Note: Rigid lug suspension required for attaching to hoist. Apply for other than standard beam adjustment.
Beam end stop omitted for picture clarity

Lodestar with Series 635 motor driven trolley



Specifications — motor driven trolley

Rated capacity* (tons)	Product code	For use with model	Power supply	Standard travel speed (F.P.M.)	Motor H.P.	Std. range of adj. Am. std. S-beams		Minimum radius curve (in.)	Approx. shipping weight (lbs.)
						Depth (in.)	Flange width (in.)		
1/8 - 2	3670	A-RR	115-1-60	75	1/4	6 – 15	3 ³ / ₈ – 5 ⁵ / ₈	30	118
1/8 - 2	3671	A-RR	230-3-60	75	1/4	6 – 15	3 ³ / ₈ – 5 ⁵ / ₈	30	118
1/8 - 2	3672	A-RR	460-3-60	75	1/4	6 – 15	3 ³ / ₈ – 5 ⁵ / ₈	30	118
3	9577	RT-RRT	115-1-60	75	1/4	8 – 15	4 – 5 ⁵ / ₈	30	120
3	9578	RT-RRT	230-3-60	75	1/4	8 – 15	4 – 5 ⁵ / ₈	30	120
3	9579	RT-RRT	460-3-60	75	1/4	8 – 15	4 – 5 ⁵ / ₈	30	120
1/8 - 2	9315	A-RR	115-1-60	30	1/4	6 – 15	3 ³ / ₈ – 5 ⁵ / ₈	30	113
1/8 - 2	9316	A-RR	230-3-60	30	1/4	6 – 15	3 ³ / ₈ – 5 ⁵ / ₈	30	113
1/8 - 2	9317	A-RR	460-3-60	30	1/4	6 – 15	3 ³ / ₈ – 5 ⁵ / ₈	30	113
3	9318	RT-RRT	115-1-60	30	1/4	8 – 15	4 – 5 ⁵ / ₈	30	120
3	9319	RT-RRT	230-3-60	30	1/4	8 – 15	4 – 5 ⁵ / ₈	30	120
3	9320	RT-RRT	460-3-60	30	1/4	8 – 15	4 – 5 ⁵ / ₈	30	120

Fabric chain bag



CM's chain bags offer an alternative to the standard metal chain container for use with Lodestar or Valustar electric chain hoists. Chain bags are made from an open weave vinyl coated polyester designed especially for extended outdoor life. Not recommended for applications over 300°F, in extremely caustic environments or for chain weight exceeding 300 lbs.

Metal chain container



Lodestar XL electric chain hoist

Columbus McKinnon introduces an expanded line of Lodestar XL electric chain hoists for lifting applications from 2 to 7½ tons. The new offering provides heavy-duty hoists featuring faster speeds, less reeving, and higher capacities than traditional chain hoists. Workers in automotive plants, heavy equipment manufacturing, paper mills, and related rugged work environments will experience the same dependability and versatility that they have relied on for many years.

The NEW features of the Lodestar XL Electric Chain Hoist include:

- Lifting capacities up to 7½ tons
- Increased lifting speeds throughout the line
- Double reeved units with 3-5 ton lifting capacities
- Maximum lifting speed of 30 feet per minute

A glimpse of the many features of the Lodestar XL that have honed its reputation for durability and long life:

- Heavy-duty, multiple disc braking system
- Forged ten-pocket oblique-lay liftwheel for smooth chain operation, constant chain speed, and reduced chain wear
- Gearing operated in oil bath for increased lifting life and quiet operation
- Rated H-4, heavy-duty
- Standard overload protector
- Screw-type limit switches
- Thermally protected motor
- Factory tested at 125% of rated capacity
- Made in U.S.A.

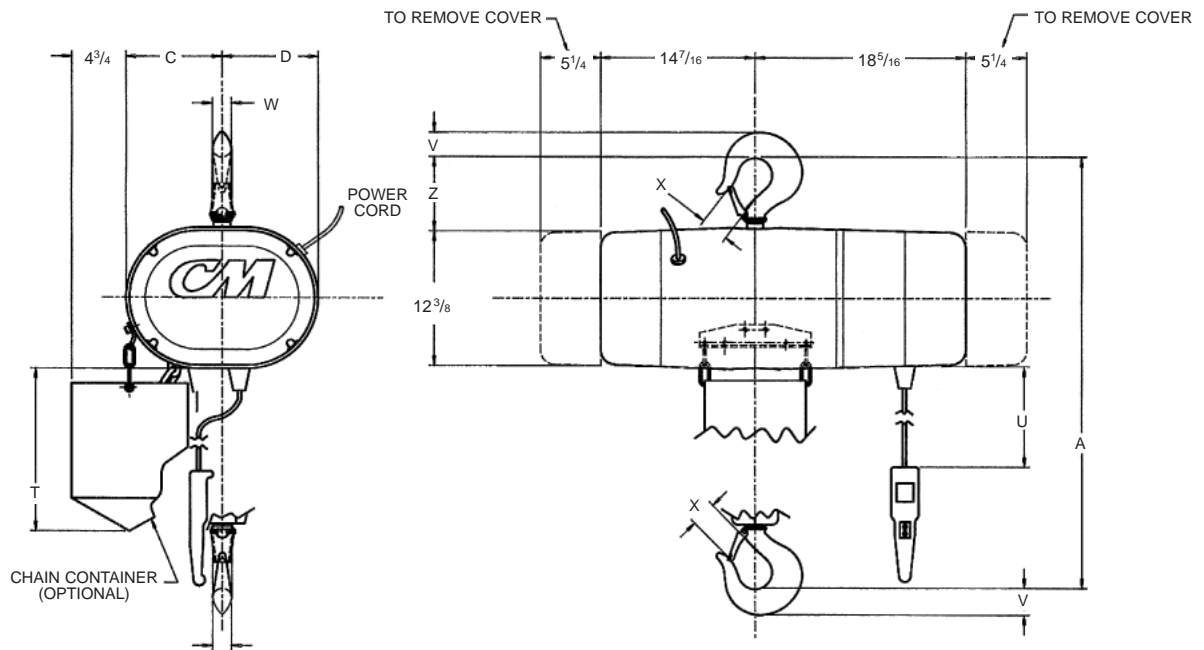


Capacity (tons)	Reeving	Speed (fpm)	230/460-3-60				575-3-60			
			Hook	Plain Trolley	Geared Trolley	Motor Driven Trolley	Hook	Plain Trolley	Geared Trolley	Motor Driven Trolley
2	1	18	5201H	5201P	5201G	5201M	5231H	5231P	5231G	5231M
2	1	24	5204H	5204P	5204G	5204M	5232H	5232P	5232G	5232M
2	1	30	5265H	5265P	5265G	5265M	5266H	5266P	5266G	5266M
3	2	9	5209H	5209P	5209G	5209M	5233H	5233P	5233G	5233M
3	2	12	5212H	5212P	5212G	5212M	5234H	5234P	5234G	5234M
3	2	15	5267H	5267P	5267G	5267M	5268H	5268P	5268G	5268M
4	2	9	5215H	5215P	5215G	5215M	5235H	5235P	5235G	5235M
4	2	12	5218H	5218P	5218G	5218M	5236H	5236P	5236G	5236M
4	2	15	5269H	5269P	5269G	5269M	5278H	5278P	5278G	5278M
5	3	6	5221H	5221P	5221G	5221M	5237H	5237P	5237G	5237M
5	3	8	5224H	5224P	5224G	5224M	5238H	5238P	5238G	5238M
5	2	9	5279H	5279P	5279G	5279M	5280H	5280P	5280G	5280M
5	2	12	5283H	5283P	5283G	5283M	5284H	5284P	5284G	5284M
5	2	15	5285H	5285P	5285G	5285M	5286H	5286P	5286G	5286M
6	3	6	5227H	5227P	5227G	5227M	5239H	5239P	5239G	5239M
6	3	8	5230H	5230P	5230G	5230M	5240H	5240P	5240G	5240M
6	3	10	5287H	5287P	5287G	5287M	5288H	5288P	5288G	5288M
7½	3	6	—	5289P	5289G	5289M	—	5290P	5290G	5290M
7½	3	10	—	5291P	5291G	5291M	—	5292P	5292G	5292M

3.5 H.P. XL Models (unshaded) – Available in single speed, 3:1; two speed, variable speed

5.5 H.P. XL Models (shaded) – Available in single speed, variable speed

Lodestar XL with hook suspension

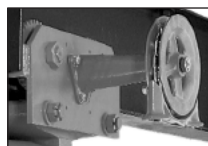


Clearance dimensions (in.) ^W

Dimensions	Single Reeved 2 ton capacity	Double Reeved 3-5 ton capacity	Triple Reeved 5-6 ton capacity
A	25	35 ^{5/16}	36 ^{3/16}
C	8 ^{7/16}	11 ^{3/8}	11 ^{3/8}
D	8 ^{1/8}	5 ^{1/2}	5 ^{1/2}
T (based on 10 ft. lift)	14 ^{3/16}	14 ^{3/16}	14 ^{3/16}
U (based on 10 ft. lift)	6'- 3"	6'- 3"	6'- 3"
V	1 ^{1/2}	2 ^{1/4}	2 ^{1/4}
W	1 ^{1/8}	1 ^{5/8}	1 ^{5/8}
X	1 ^{5/16}	2 ^{1/16}	2 ^{1/16}
Z	4 ^{1/8}	5 ^{1/2}	5 ^{1/2}



Lodestar XL with plain trolley and geared Trolley



Geared Trolley

Lodestar XL with motor driven trolley (2 ton)



Lodestar XL with motor driven trolley (3-7^{1/2} ton)



* ⚠ WARNING

Overloading and improper use can result in injury.

To avoid injury:

- Do not exceed working load limit, load rating capacity
- Do not use to lift people or loads over people.
- use only alloy chain for overhead lifting.
- Read and follow all instructions.

Valustar electric chain hoist

Designed specifically for general commercial applications. This compact, lightweight hoist features:

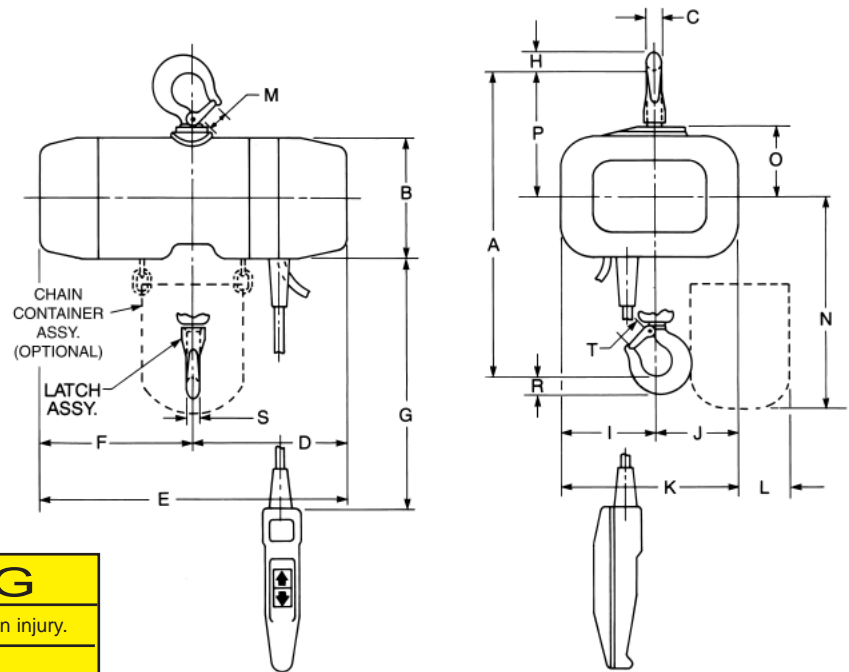
- Fully machined and heat treated liftwheel with hardened chain guides for smooth chain operation and reduced chain wear
- Standard lift 10, 15 & 20 ft.
- 5 ft. power cord length
- Heavy-duty caliper type AC brake
- Rugged NEMA 4 control station, 115 volt control circuit
- Easy to install and maintain
- Hoistaloy load chain for smooth operation and maximum chain life
- Efficient regenerative braking system to avoid heat generation in power train
- Enclosed hoist duty motor
- Gear train lifetime lubricated with non-oxidizing grease
- Latch type hooks
- Hook suspension standard
- Fully machined and heat treated gear train
- Standard overload Protector device
- H3 duty-1 phase; H-4 duty-3 phase
- One-year warranty
- Metric rated
- Made in U.S.A.



Specifications

	Product code		Model	Max. capacity tons	Hoist lifting speed FPM	Approximate shipping wt. (lbs.)	
	115-1-60	230/460 3-60				115-1-60	230/460 3-60
Single speed 10' lift	2401	2402	WB	1/4	16	54	58
	2403	2404	WF	1/2	16	60	58
	2405	2406	WH	1	8	70	68
	2407	2408	WL	1	16	105	106
	2409	2410	WR	2	8	130	122
Single speed 15' lift	2401B	2402B	WB	1/4	16	64	62
	2403B	2404B	WF	1/2	16	64	62
	2405B	2406B	WH	1	8	77	75
	2407B	2408B	WL	1	16	111	112
	2409B	2410B	WR	2	8	136	128
Single speed 20' lift	2401C	2402C	WB	1/4	16	68	66
	2403C	2404C	WF	1/2	16	68	66
	2405C	2406C	WH	1	8	84	82
	2407C	2408C	WL	1	16	116	117
	2409C	2410C	WR	2	8	150	142

Longer lifts and modifications available. Apply for details.



*** ⚠ WARNING**

Overloading and improper use can result in injury.

To avoid injury:

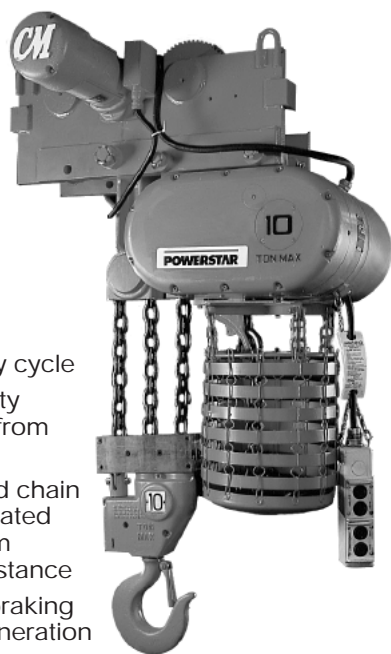
- Do not exceed working load limit, load rating capacity
- Do not use to lift people or loads over people.
- use only alloy chain for overhead lifting.
- Read and follow all instructions.

Clearance dimensions (in.)

Dimension	Rated capacity* (tons)						
	1/4	1/2	1/2	1	1 1/2	2	
	Model WB	Model WF	Model WE	Model WH	Model WJ	Model WL	Model WR
A	14 1/4	14 1/4	17 7/8	17 7/8	15 9/16	15 9/16	22 1/2
B	6 1/8	6 1/8	6 1/8	6 1/8	7 5/8	7 5/8	7 5/8
C	1 1/16	1 1/16	7/8	7/8	7/8	7/8	1 1/8
D	8	8	8	8	9	9	9
E	16 1/16	16 1/16	16 1/16	16 1/16	20 3/16	20 3/16	20 3/16
F	8 1/16	8 1/16	8 1/16	8 1/16	11 3/16	11 3/16	11 3/16
G**	6'-3"	6'-3"	6'-3"	6'-3"	6'-3"	6'-3"	6'-3"
H	1	1	1 3/16	1 3/16	1 3/16	1 3/16	1 1/2
I	4 13/16	4 13/16	3 7/8	3 7/8	7 1/4	7 1/4	6 3/16
J	3 15/16	3 15/16	4 7/8	4 7/8	5 7/16	5 7/16	6 1/2
K	8 3/4	8 3/4	8 3/4	8 3/4	12 11/16	12 11/16	12 11/16
L	1 11/16	1 11/16	1 11/16	1 11/16	7/16	7/16	7/16
M	1	1	1 1/8	1 1/8	1 1/8	1 1/8	1 5/16
N**	12 15/16	12 15/16	15 15/16	15 15/16	16 11/16	16 11/16	22 11/16
O	3 9/16	3 9/16	3 9/16	3 9/16	4	4	4
P	6 3/16	6 3/16	6 1/2	6 1/2	6 7/8	6 7/8	7 3/8
R	1	1	1 3/16	1 3/16	1 3/16	1 3/16	1 1/2
S	1 1/16	1 1/16	7/8	7/8	7/8	7/8	1 1/8
T	1	1	1 1/8	1 1/8	1 1/8	1 1/8	1 5/16

**Based on 10 foot lift units

Powerstar electric chain hoist



- H-4 or better rated duty cycle
- Designed for heavy-duty industrial applications from 2 to 20 ton capacities
- Liftwheel has machined chain pockets and is heat treated alloy steel for maximum strength and wear resistance
- Efficient regenerative braking system avoids heat generation in power train
- Motors up to 7 1/2 h.p. provide a wide range of lifting speeds
- Single or two speed controls. Two speed models operate on 3:1 speed ratio
- Standard adjustable upper and lower screw limit switches
- Standard overload Protector device
- Hoist alloy load chain can be easily inspected for wear and abuse
- True vertical lift
- Factory tested to 125% of rated capacity prior to shipment
- Metric rated except for 10 & 20 ton capacities
- Rugged aluminum alloy hoist frame
- Chain guide surrounds liftwheel
- Machined and hardened steel Helical gears used throughout hoist for optimum performance and mechanical efficiency.
- Extensive use of life-lubricated bearings plus sealed oil bath power train reservoir for minimum maintenance.

Designed specifically as an alternative to wire rope hoists for high speed lifting of loads from 2 to 20 tons in a space saving chain hoist.

- Dual braking system
- Heavy duty, industrial single speed controls include magnetic reversing contactor which operates on 115 volts provided by a control transformer.
- Totally enclosed, ball bearing, 30 minute rated, thermally protected, hoist duty motor is standard.
- Push button control is weatherproof (NEMA 4 rated).
- Drop of push button control is 4 ft. above hook at lowest position, unless otherwise specified.
- External push button chain strain relief is standard.
- Power cord length is 2 1/2 ft. unless otherwise specified.
- Trolley design permits easy adjustment for installation on a broad range of beam flange widths.
- Trolley wheels have double row, tapered roller bearings plus machined and hardened universal treads to permit operation on American Standard or flat flanged sections interchangeably.
- Spur gearing used in all motorized trolleys for improved efficiency and durability.
- Drop of hand chain on geared trolleys is 2 ft. above hook at lowest position, unless otherwise specified.
- Designed to be maintained "on the beam."
- Up to 600 lineal feet of chain
- Weatherproof (NEMA3R)
- Lifetime warranty
- Made in U.S.A.

* WARNING

Overloading and improper use can result in injury.

To avoid injury:

- Do not exceed working load limit, load rating capacity
- Do not use to lift people or loads over people.
- Use only alloy chain for overhead lifting.
- Read and follow all instructions.

Powerstar

Specifications – standard unit

Rated capacity* (tons)	Single speed			Two speed			Reeving (single)	Std. lift** (ft.)	HP	Headroom w/lug suspension (in.)	Headroom w/trolley suspension (in.)	Hoist only approx. shipping weight	
	Lifting speed (F.P.M.)	Product code 230-3-60 460-3-60		Lifting speed (F.P.M.)	Product code 230-3-60 460-3-60							Single speed hoist (lbs.)	Two speed hoist (lbs.)
2	20	7300	7301	20/7	7302	7303	1	20	5	28 ¹⁵ / ₁₆	30 ¹⁵ / ₁₆	392	402
	24	7001	7002	24/8	7003	7004	1	20	5	28 ¹⁵ / ₁₆	30 ¹⁵ / ₁₆	392	402
	32	7304	7305	32/11	7306	7037	1	20	5	28 ¹⁵ / ₁₆	30 ¹⁵ / ₁₆	404	414
	40	7005	7006	40/13	7007	7008	1	20	5	28 ¹⁵ / ₁₆	30 ¹⁵ / ₁₆	404	414
	48	7308	7309	48/16	7310	7311	1	20	7.5	28 ¹⁵ / ₁₆	30 ¹⁵ / ₁₆	408	418
3	20	7312	7313	20/7	7314	7315	1	20	5	28 ¹⁵ / ₁₆	31 ¹ / ₂	404	414
	24	7009	7010	24/8	7011	7012	1	20	5	28 ¹⁵ / ₁₆	31 ¹ / ₂	404	414
	32	7316	7317	32/11	7318	7319	1	20	7.5	28 ¹⁵ / ₁₆	31 ¹ / ₂	408	418
	40	7013	7014	40/13	7015	7016	1	20	7.5	28 ¹⁵ / ₁₆	31 ¹ / ₂	408	418
4	10	7320	7321	10/3	7322	7323	2	20	5	34	36 ⁹ / ₁₆	478	488
	12	7324	7325	12/4	7326	7327	2	20	5	34	36 ⁹ / ₁₆	490	500
	16	7328	7329	16/5	7330	7331	2	20	5	34	36 ⁹ / ₁₆	490	500
	20	7332	7333	20/7	7334	7335	2	20	7.5	34	36 ⁹ / ₁₆	490	500
	24	7336	7337	24/8	7338	7339	2	20	7.5	34	36 ⁹ / ₁₆	494	504
5	10	7340	7341	10/3	7342	7343	2	20	5	34	36 ⁹ / ₁₆	478	488
	12	7344	7345	12/4	7346	7347	2	20	5	34	36 ⁹ / ₁₆	478	488
	16	7029	7030	16/5	7031	7032	2	20	5	34	36 ⁹ / ₁₆	490	500
	20	7348	7349	20/7	7350	7351	2	20	7.5	34	36 ⁹ / ₁₆	494	500
	24	7017	7018	24/8	7019	7020	2	20	7.5	34	36 ⁹ / ₁₆	494	504
6	10	7352	7353	10/3	7354	7355	2	20	5	34	36 ⁹ / ₁₆	548	558
	12	7052	7053	12/4	7054	7055	2	20	5	34	36 ⁹ / ₁₆	548	558
	16	7356	7357	16/5	7358	7359	2	20	7.5	34	36 ⁹ / ₁₆	552	562
	20	7056	7057	20/7	7058	7059	2	20	7.5	34	36 ⁹ / ₁₆	552	562
7 ¹ / ₂	7	7360	7361	7/2	7362	7363	3	20	5	Apply	39 ³ / ₈	594	604
	8	7364	7365	8/3	7366	7367	3	20	5	Apply	39 ³ / ₈	606	616
	11	7368	7369	11/4	7370	7371	3	20	5	Apply	39 ³ / ₈	606	616
	14	7372	7373	14/5	7374	7375	3	20	7.5	Apply	39 ³ / ₈	622	632
	16	7376	7377	16/5	7378	7379	3	20	7.5	Apply	39 ³ / ₈	622	632
9	7	7380	7381	7/2	7382	7383	3	20	5	Apply	41 ³ / ₁₆	610	620
	8	7384	7385	8/3	7386	7387	3	20	5	Apply	41 ³ / ₁₆	610	620
	11	7388	7389	11/4	7390	7391	3	20	7.5	Apply	41 ³ / ₁₆	626	636
	13	7392	7393	13/4	7394	7395	3	20	7.5	Apply	41 ³ / ₁₆	626	636
10	7	7396	7397	7/2	7398	7399	3	20	5	Apply	41 ³ / ₁₆	610	620
	8	7400	7401	8/3	7402	7403	3	20	5	Apply	41 ³ / ₁₆	610	620
	11	7404	7405	11/4	7406	7407	3	20	7.5	Apply	41 ³ / ₁₆	626	636
	13	7408	7409	13/4	7410	7411	3	20	7.5	Apply	41 ³ / ₁₆	626	636
12	5	7412	7413	5/2	7414	7415	4	20	5	Apply	41 ³ / ₁₆	710	720
	6	7416	7417	6/2	7418	7419	4	20	5	Apply	41 ³ / ₁₆	710	720
	8	7420	7421	8/3	7422	7423	4	20	7.5	Apply	41 ³ / ₁₆	726	736
	10	7424	7425	10/3	7426	7427	4	20	7.5	Apply	41 ³ / ₁₆	726	736
15	4	7428	7429	4/1.3	7430	7431	5	20	5	Apply	47 ⁵ / ₁₆	805	815
	5	7432	7433	5/1.5	7434	7435	5	20	5	Apply	47 ⁵ / ₁₆	805	815
	6	7436	7437	6/2	7438	7439	5	20	7.5	Apply	47 ⁵ / ₁₆	817	827
	8	7440	7441	8/2.5	7442	7443	5	20	7.5	Apply	47 ⁵ / ₁₆	817	827

** 20 ft. lift is standard — for other lifts, apply.

ShopAir™ chain hoist

Compact, powerful, and precise for assembly and manufacturing applications up to 1,000 pounds.

The CM ShopAir combines superior lifting speeds, rugged design, and precise load spotting in a portable air chain hoist. As a workstation hoist or a production line hoist, the ShopAir is the ideal choice.



CAPACITIES: 250 to 1,000 Lbs.

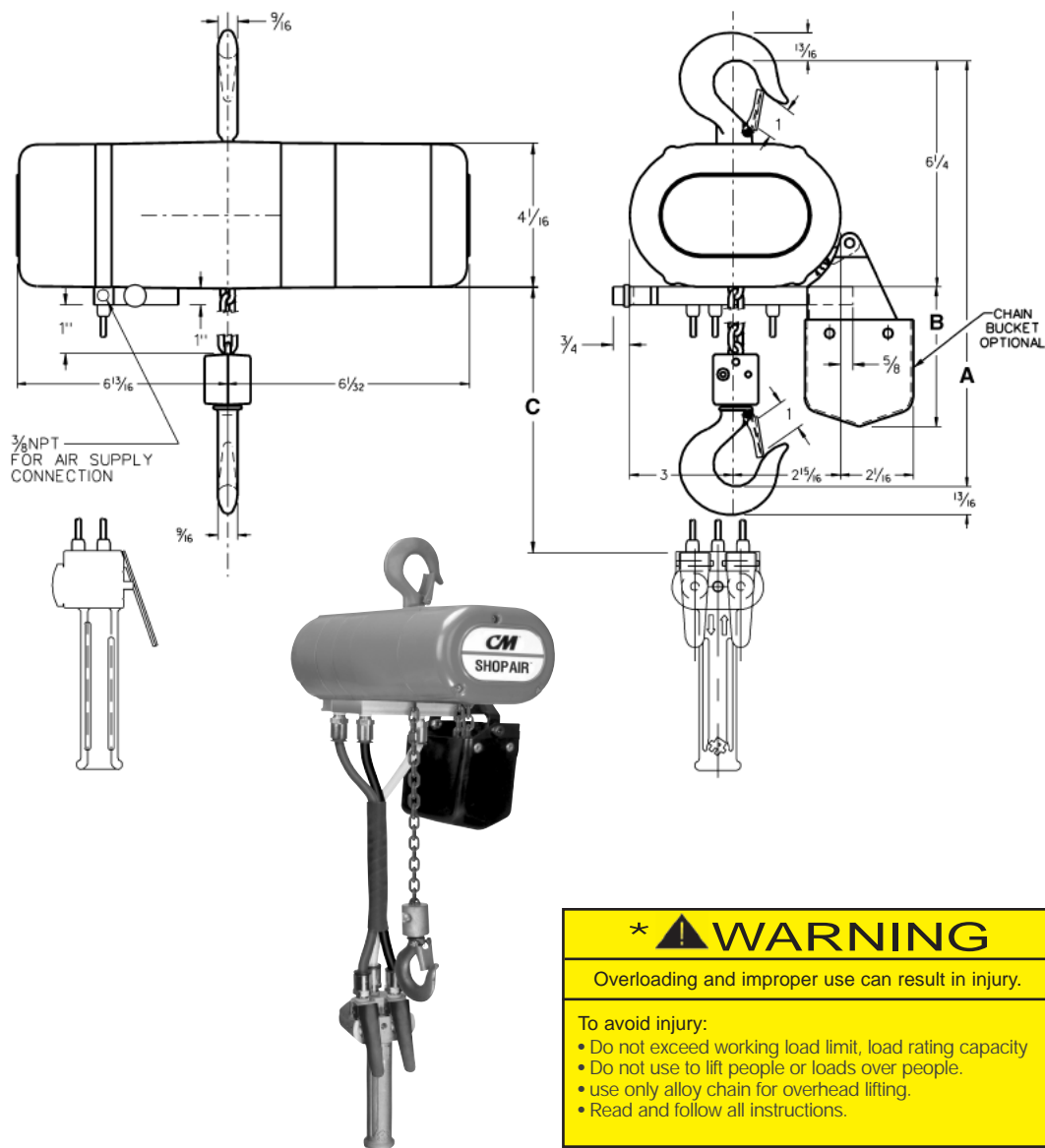
NORMAL
OPERATING
PRESSURE: 90 PSI (6.2 bar)

AIR
CONSUMPTION: 34 cu.feet/min.

- Standard Protector™ overload device.
- 10-pocket, oblique lay liftwheel provides longer chain life.
- Epoxy powder coat finish provides a durable exterior.
- Durable reduction gearing means reliable operation
- Variable flow, two lever pendant for precise load spotting.
- Threaded external exhaust for piping away exhaust in clean room or painting applications.
- Small, compact design for commercial & industrial applications.
- Industrial duty air motor for tough applications.
- Gear train is lifetime - lubricated with non-oxidizing grease.
- Hardened forged steel, latch - type lower hook rotates 360°.
- Hardened forged steel, rigid latch - type upper hook.
- Rugged cast aluminum alloy hoist frame.
- Alloy load chain.
- Maximum pendant drop - 36 ft.
- Lifetime warranty against defects in materials and workmanship.
- Made in U.S.A.

300 Lb. model
shown with optional
chain container

ShopAir™ air chain hoist



★ ⚠ WARNING

Overloading and improper use can result in injury.

To avoid injury:

- Do not exceed working load limit, load rating capacity
- Do not use to lift people or loads over people.
- use only alloy chain for overhead lifting.
- Read and follow all instructions.

Specifications

Product code	Cap. (lbs.)	(in.)			Number of load chains	Speed FPM (under full load)		Shipping weight (lbs.)
		A	B	*C		lifting	lowering	
2178	250	10 7/8	3 7/8	6' 4"	1	31	83	30
2180	300	10 7/8	3 7/8	6' 4"	1	31	83	30
2182	500	10 7/8	3 7/8	6' 4"	1	21	75	30
2179	500	11 15/16	5 3/4	6' 4"	2	16	42	34
2181	600	11 15/16	5 3/4	6' 4"	2	16	42	34
2183	1,000	11 15/16	5 3/4	6' 4"	2	11	38	34

AirStar chain hoist

Designed for general commercial applications where variable speed pneumatic power is preferable. Rated for 1/4, 1/2 and 1 ton capacities, this compact, lightweight hoist features:

- Hoistaloy load chain for heavy duty or stainless steel chain for spark resistant, medium duty loads
- Positive action, heavy-duty shoe type brake that holds the load
- Multi-vane rotary air motor for high torque, smooth operation
- Accurately machined heat treated alloy steel spur gears
- Spark resistant models available for hazardous environments
- Pull cord or pendant throttle control available
- Pull cord control hoists provide a lightweight, economical hoist for accurate control of loads
- Optional pendant throttle control hoists offer ergonomic, one-hand control for ease of operation
- Hook or lug suspension available
- Inlet air swivel with built-in strainer provides free hoist movement
- Aluminum frame and end cover contributes to the lightweight, easily portable, and rugged design
- External brake adjustment
- Limit stops prevent over-travel in upper and lowering directions
- Equa-torque gearing of alloy steel, heat treated spur gears are accurately machined to provide a close meshed, compact gear reduction
- Tapped exhaust port 1/2 NPTF... for cleanroom applications or to add a supplemental muffler in addition to the built-in muffler for even quieter operation
- Lifetime warranty
- Metric rated
- Made in U.S.A.



Basic Hoist Data

Rated Loads: 1/4, 1/2 and 1 Ton
(Spark resistant models are rated at 3/8 and 3/4 ton)

Air Pressure

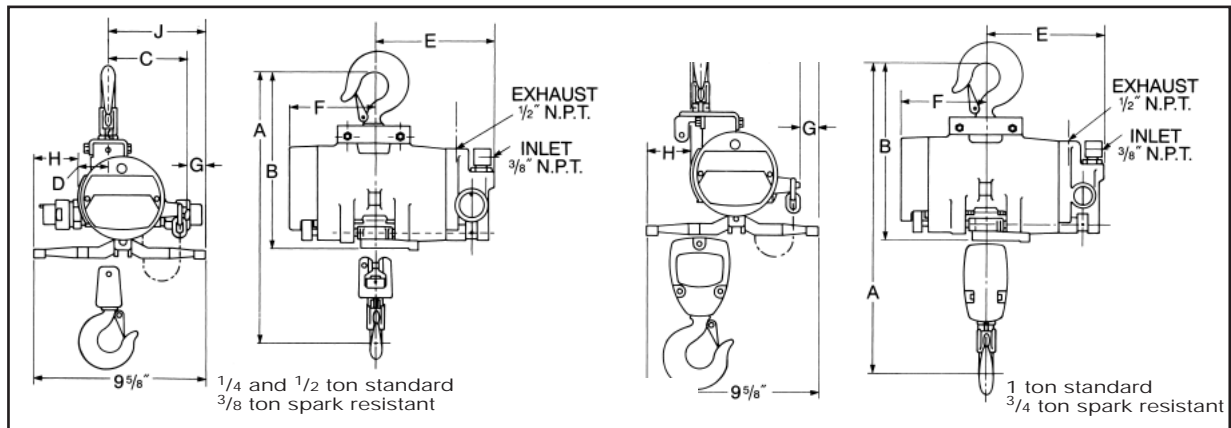
Recommended: 90 PSI
Air Consumption: 48 SCFM at 90 PSI
Net Wt. (Basic Hoist): 36 lbs.
Suspension: Hook or lug
Control: Pull Cord or Pendant Throttle
Air Inlet: 3/8 NPTF
Air Supply Hose: 1/2 I.D. min.

Air Exhaust: 1/2 NPTF

Lift: 10 foot lifts are standard. Longer lifts are an optional extra.
Pendant Control: 6 foot length is standard. Longer lengths are an optional extra.
Optional: For greater corrosion resistance, a plated load chain is offered as an optional extra.

AirStar with hook suspension

* Also available with lug suspension for direct trolley attachment.



Clearance dimensions (in.)

Rated capacity* (tons)	Product code	A	B	C	D	E	F	G	H	J
1/4	7400A	15 1/4	10 1/4	4 3/4	1 3/4	7 1/16	5 1/16	15/16	2 3/16	5 11/16
1/4	7400B	15 1/4	10 1/4	4 3/4	1 3/4	7 1/16	5 1/16	15/16	2 3/16	5 11/16
1/4	7400C	15 1/4	10 1/4	4 3/4	1 3/4	7 1/16	5 1/16	15/16	2 3/16	5 11/16
1/4	7400D	15 1/4	10 1/4	4 3/4	1 3/4	7 1/16	5 1/16	15/16	2 3/16	5 11/16
1/2	7401A	15 1/4	10 1/4	4 3/4	1 3/4	7 1/16	5 1/16	15/16	2 3/16	5 11/16
1/2	7401B	15 1/4	10 1/4	4 3/4	1 3/4	7 1/16	5 1/16	15/16	2 3/16	5 11/16
1/2	7401C	15 1/4	10 1/4	4 3/4	1 3/4	7 1/16	5 1/16	15/16	2 3/16	5 11/16
1/2	7401D	15 1/4	10 1/4	4 3/4	1 3/4	7 1/16	5 1/16	15/16	2 3/16	5 11/16
3/8	7403A	15 1/4	10 1/4	4 3/4	1 3/4	7 1/16	5 1/16	15/16	2 3/16	5 11/16
3/8	7403B	15 1/4	10 1/4	4 3/4	1 3/4	7 1/16	5 1/16	15/16	2 3/16	5 11/16
1	7402A	18	10 1/4	5 3/4	3/4	7 1/16	5 1/16	15/16	2 3/16	6 11/16
1	7402B	18	10 1/4	5 3/4	3/4	7 1/16	5 1/16	15/16	2 3/16	6 11/16
1	7402C	18	10 1/4	5 3/4	3/4	7 1/16	5 1/16	15/16	2 3/16	6 11/16
1	7402D	18	10 1/4	5 3/4	3/4	7 1/16	5 1/16	15/16	2 3/16	6 11/16
3/4	7404A	18	10 1/4	5 3/4	3/4	7 1/16	5 1/16	15/16	2 3/16	6 11/16
3/4	7404B	18	10 1/4	5 3/4	3/4	7 1/16	5 1/16	15/16	2 3/16	6 11/16

Specifications

Type	Rated capacity* (tons)	Pull cord control Product code no.	Net wt. (lbs.)	Pendant throttle control** Product code no.	Net wt. (lbs.)	Reeving	Lifting speed max.† (F.P.M.)	Lowering speed max.† (F.P.M.)
Standard models								
Roller chain	1/4	7400A	37	7400B	47	1	65	95
	1/2	7401A	37	7401B	47	1	45	120
	1	7402A	51	7402B	61	2	23	60
Link chain	1/4	7400C	36	7400D	46	1	65	95
	1/2	7401C	36	7401D	46	1	45	120
	1	7402C	49	7402D	59	2	23	60
Spark resistant models								
Link chain	3/8	7403A	36	7403B	46	1	60	100
	3/4	7404A	49	7404B	59	2	29	52

**Equipped with 6 ft. pendant control.

†Speeds based on 90 PSI line pressure and with full rated hoist load.

Hoist speeds are adjustable and can be reduced to 50% of full rated speed. Shipped from factory with hoisting speed set at maximum rated speed; lowering speed set at reduced speed.

Standard lift 10 feet. Longer lifts available.

AirStar 6 air hoist

Designed for general industrial applications where variable speed pneumatic power is preferable. Rated for loads of up to 3 tons. This compact, lightweight hoist features:

- Hoist alloy load chain for heavy duty or stainless steel chain for spark resistant, medium duty loads
- Lightweight aluminum frame and cover
- Positive action, spring biased Weston-type load brake holds the load, provides exacting load spotting and control
- Multi-vane rotary air motor with eight vanes for high torque, smooth operation, positive starting
- Precision cut heat treated helical and spur gear combination for quiet, efficient operation
- Pendant throttle handle is full flow design for precision throttle capabilities
- Spark resistant models available for hazardous environments
- Hook or lug suspension available
- Standard overload protector device
- Internal Muffler—reduces sound level
- Throttle Valve—precision throttle valves meter the air for smooth operation
- Chain container optional
- Lifetime warranty
- Metric rated
- Made in U.S.A.

Basic Hoist Data

Rated Loads: 1, 2, and 3-ton (Spark resistant models are rated at 1/2, 1 and 2 ton)

Air Pressure

Recommended: 90 PSI

Air Consumption: 70 SCFM (full load-full speed) slow speed model 80 SCFM (full load-full speed) fast speed model

Pendant Control Hose: 6 foot pendant hose standard for 10 foot lift hoist, longer hose assemblies up to 36 foot available.

Lift: 10 foot lifts are standard. Longer lifts are an optional extra.

Net Wt. (Basic Hoist): 100 pounds

Suspension: Hook or lug

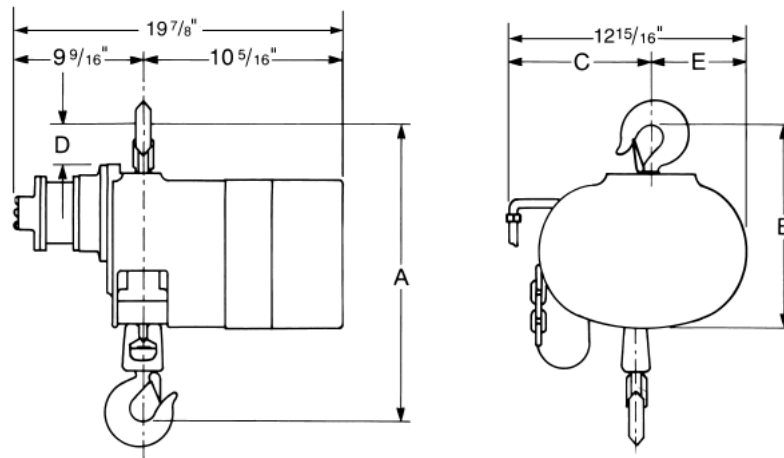
Air Inlet Size: 3/4 NPTF

Air Supply Hose Size: 3/4 I.D. min.



AirStar 6 with hook suspension

* Also available with lug suspension for direct trolley attachments



Clearance dimensions (in.)

Rated capacity* (tons)	Product code	A	B	C	D	E
1/2	7408A	16 3/4	11 1/16	6 3/4	2 11/16	6 3/16
1	7405A	16 3/4	11 1/16	6 3/4	2 11/16	6 3/16
1	7405B	16 3/4	11 1/16	6 3/4	2 11/16	6 3/16
1	7409A	22 7/8	12 13/16	8 1/16	4 7/16	4 7/8
2	7406A	22 7/8	12 13/16	8 1/16	4 7/16	4 7/8
2	7406B	22 7/8	12 13/16	8 1/16	4 7/16	4 7/8
2	7410A	25 7/8	14 3/8	5 13/16	5 5/8	7 1/8
3	7407A	25 7/8	14 3/8	5 13/16	5 5/8	7 1/8
3	7407B	25 7/8	14 3/8	5 13/16	5 5/8	7 1/8

Specifications

Model	Rated capacity* (tons)	Product code	Reeving	Full load hoist speed** (F.P.M.)	Full load lowering speed** (F.P.M.)	Approximate net weight (lbs.)
Standard model	1	7405A	1	13	18	93
	1	7405B	1	30	42	95
	2	7406A	2	6	9	110
	2	7406B	2	15	21	112
	3	7407A	3	4	6	144
	3	7407B	3	10	14	146
Spark resistant model	1/2	7408A	1	16	22	95
	1	7409A	2	8	11	112
	2	7410A	3	5	7	146

**Hoist speeds based on 90 PSI line pressure with full load at full throttle.

CM Series 632

close radius trolley

With revolutionary advances, this shorter, more compact trolley is 50% lighter than competitive trolleys, yet every bit as tough.

- Negotiates radius curves as tight as 7 to 10 inches
- Made of highest quality rolled steel
- Unique double row, ball bearing wheel design for greater wear capacity
- Larger V-bars available for wider flange adjustment
- For low headroom applications
- Bearings prepacked with lifetime lubricant
- Exclusive Dial-Fit collar quickly adapts trolley to wide range of beams and patented rails
- Dust covers shield and protect bearings
- Trolleys available for larger beams, rails or tracks; contact CM
- Cast iron trolley guards available (except for 3 ton)
- Lifetime warranty
- Made in U.S.A.

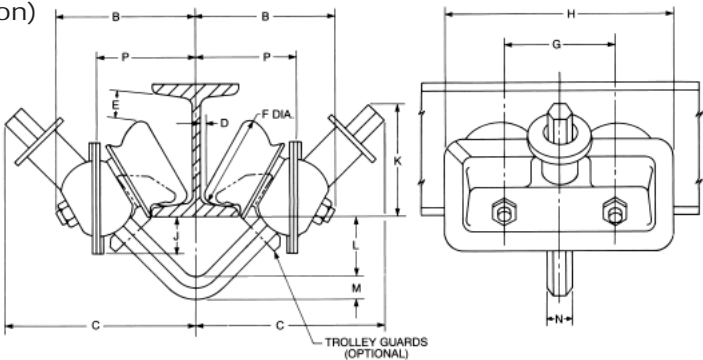


WARNING

Overloading and improper use can result in injury.

To avoid injury:

- Do not exceed working load limit, load rating capacity
- Do not use to lift people or loads over people.
- use only alloy chain for overhead lifting.
- Read and follow all instructions.



Clearance dimensions (in.)

Dimension	Rated capacity* (tons)			
	1/4 & 1/2	1	1 1/2 & 2	3
Min. radius curve (in.)	7	7	10	10
B	4 1/4	4 3/8	5 5/8	6 3/16
C	5 7/8	6	7 1/2	8 1/16
D	3/16	3/16	3/8	1 1/16
E	13/16	13/16	2 3/16	4 1/16
F	2 3/4	2 3/4	3 1/2	3 1/2
G	3 3/8	3 3/8	4 1/2	4 1/2
H	7	7	9	9
J	1 1/8	1 1/8	1 1/2	1 5/8
K	3 3/8	3 1/2	4 3/8	4 13/16
L	1 13/16	1 5/8	2	2 5/8
M	1 1/16	7/8	1 1/8	1 1/8
N	7/8	1	1 1/4	1 1/4
P	3	3 1/8	3 7/8	4 15/16

Dimensions given are for minimum S-beam and will vary with larger beams.

Specifications

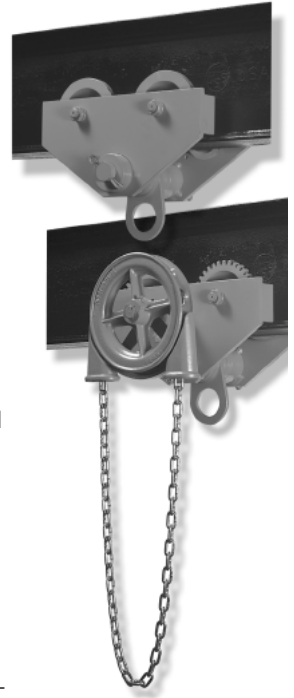
Rated capacity* (tons)	Product code	Adj. for standard S-beams		Tread diameter (in.)	Net weight (lbs.)	Shipping weight (lbs.)	Minimum radius curve (in.)
		Depth of beam (in.)	Flange width (in.)				
1/4-1/2	3222	4-12	2 5/8-5 1/16	2 3/4	9	10	7
1	3224	4-12	2 5/8-5 1/16	2 3/4	10	12	7
1 1/2-2	3226	6-15	3 3/8-5 5/8	3 1/2	23	25	10
3	3230	8-18	4- 6 1/4	3 1/2	29	33	10

All capacities can be supplied for S-beams larger than listed and also for wide flange beams, rails or tracks with approximately equivalent flange widths.

Series 84A plain or geared trolley

Manufactured for heavy duty, industrial grade applications. CM Series 84A trolleys feature fully sealed, precision bearings, heavy duty side frames and fully machined wheel tread for superior performance and *long life — with minimal maintenance.*

- Available in capacities from 1/4 through 25 ton with 30 through 50 ton trolleys available as tandem construction.
- Lifetime lubricated, precision ball bearings on trolleys through 3 ton capacity. Trolleys with capacities 4 tons and greater are equipped with eight sealed, Timken tapered roller bearings and grease fittings.
- Heavy rolled steel side frames extend beyond the wheels to provide these trolleys with superior strength, rigidity and added protection for the track-wheels. Units with capacities from 1/4 through 12 tons employ universal wheel treads for use on flat or tapered beam flanges. Units with capacities from 16 through 25 tons operate on American Standard I-beams with tapered flanges. For patented track, consult factory.
- Trolley wheels are fully machined from alloy cast iron and hardened for high strength and long life.
- Alloy steel axles and equalizer pins are heat treated for maximum strength and wear life.
- Geared versions have fully machined trackwheel gears and incorporate a swinging chain guide which keeps the hand chain aligned and free from jamming.
- Available to fit a broad range of wider flange beams and patented track applications not listed - contact factory.
- Made in the USA
- Spark resistant models available — add suffix "SR"



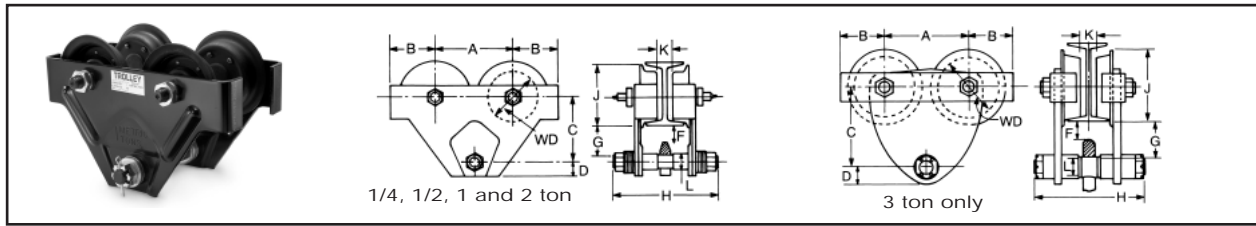
Specifications

Product code			Rated capacity (tons)	Beam height (in.)	Flange width (in.)	Minimum radius curve (in.)	Approximate net weight	
	Plain	Geared					Plain	† Geared
1641-0025		1642-0025	1/4	4 - 12	2.66 - 5.00	20	23	38
1641-0050		1642-0050	1/2	4 - 12	2.66 - 5.00	20	23	38
1641-0100		1642-0100	1	5 - 12	3.00 - 6.00	24	43	62
1641-0150		1642-0150	1 1/2	5 - 12	3.00 - 6.00	24	45	65
1641-0200		1642-0200	2	6 - 18	3.33 - 6.25	30	67	90
1641-0300		1642-0300	3	6 - 18	3.33 - 6.25	30	70	93
1641-0400		1642-0400	4	8 - 24	4.00 - 7.00	36	155	184
1641-0500		1642-0500	5	8 - 24	4.00 - 7.00	36	160	188
1641-0600		1642-0600	6	8 - 24	4.00 - 7.00	36	160	188
1641-0800		1642-0800	8	10 - 24	4.62 - 8.00	60	300	347
1641-1000		1642-1000	10	10 - 24	4.62 - 8.00	60	310	360
1641-1200		1642-1200	12	10 - 24	4.62 - 8.00	60	310	360
1631-1600		1632-1600	16	18 - 24	6.00 - 8.00	96	800	895
1631-2000		1632-2000	20	18 - 24	6.00 - 8.00	96	845	955
1631-2500		1632-2500	25	18 - 24	6.00 - 8.00	120	1045	1200

For wide flange beam adaptation, patented track or for beams larger than standard - contact factory.

† Weight less hand chain. 8 Ft. standard zinc plated hand chain drop on geared trolley. Specify curve on order.

Series 80 trolley for hook mounted hoists push type



Hook Suspension

- Available in 1/4 ton to 3 ton capacities
- Can be used with any hook suspended hoist
- Runs on either American Standard or wide flange shapes.

- Trolley side frames feature all steel construction for strength and durability
- Steel wheels with hardened treads and ball bearings provide easy and long life
- Hand geared trolleys are ideal for accurate positioning and long lifts

Rigid Mount

- For use with lug suspended hoists such as the CM AirStar or AirStar 6
- Available in 1/2 to 3 ton Trolleys attach directly to the lug brackets on the hoist

- Offers minimum headroom
- Push, hand geared, or motorized models available
- On hand geared models, anti-tilt rollers eliminate the tilting of the trolley when operating with a light load
- Features a lifetime warranty and are made in U.S.A.

Clearance dimensions (in.)

Rated capacity* (tons)	Product code	A	B	C	D	WD	† Min. F	G	H	J	** Min. K	L
1/4	80	4 ³ / ₈	2 ¹³ / ₁₆	4 ¹ / ₈	1	3 ¹ / ₈	3/4	1 ¹³ / ₁₆	7 ⁹ / ₁₆	3 ¹⁵ / ₁₆	1 ¹ / ₁₆	7/8
	80SR	4 ³ / ₈	2 ¹³ / ₁₆	4 ¹ / ₈	1	3 ¹ / ₈	3/4	1 ¹³ / ₁₆	7 ⁹ / ₁₆	3 ¹⁵ / ₁₆	1 ¹ / ₁₆	7/8
	80WFA	4 ³ / ₈	2 ¹³ / ₁₆	4 ¹ / ₈	1	3 ¹ / ₈	3/4	1 ¹³ / ₁₆	9 ⁷ / ₈	3 ¹⁵ / ₁₆	3 ¹ / ₆	7/8
1/2	81	4 ³ / ₈	2 ¹³ / ₁₆	4 ¹ / ₈	1	3 ¹ / ₈	3/4	1 ¹³ / ₁₆	7 ⁹ / ₁₆	3 ¹⁵ / ₁₆	1 ¹ / ₁₆	7/8
	81SR	4 ³ / ₈	2 ¹³ / ₁₆	4 ¹ / ₈	1	3 ¹ / ₈	3/4	1 ¹³ / ₁₆	7 ⁹ / ₁₆	3 ¹⁵ / ₁₆	1 ¹ / ₁₆	7/8
	81WFA	4 ³ / ₈	2 ¹³ / ₁₆	4 ¹ / ₈	1	3 ¹ / ₈	3/4	1 ¹³ / ₁₆	9 ⁷ / ₈	3 ¹⁵ / ₁₆	3 ¹ / ₁₆	7/8
1	82	6 ¹ / ₈	3 ⁹ / ₁₆	5 ¹ / ₈	1 ¹ / ₈	4	1 ¹ / ₁₆	2 ¹ / ₄	8 ¹ / ₄	4 ⁷ / ₈	1 ³ / ₁₆	1
	82SR	6 ¹ / ₈	3 ⁹ / ₁₆	5 ¹ / ₈	1 ¹ / ₈	4	1 ¹ / ₁₆	2 ¹ / ₄	8 ¹ / ₄	4 ⁷ / ₈	1 ³ / ₁₆	1
	82WFA	6 ¹ / ₈	3 ⁹ / ₁₆	5 ¹ / ₈	1 ¹ / ₈	4	1	2 ³ / ₁₆	10 ³ / ₈	4 ⁷ / ₈	2 ¹³ / ₁₆	1
	82WFB	6 ¹ / ₈	3 ⁹ / ₁₆	5 ¹ / ₈	1 ¹ / ₈	4	1	2 ³ / ₁₆	12 ³ / ₈	4 ⁷ / ₈	4 ¹³ / ₁₆	1
2	83	6 ⁷ / ₈	3 ¹³ / ₁₆	5 ³ / ₄	1 ⁵ / ₁₆	4 ¹⁵ / ₁₆	1 ³ / ₁₆	2 ¹ / ₄	8 ³ / ₄	—	3/4	1 ¹ / ₈
	83SR	6 ⁷ / ₈	3 ¹³ / ₁₆	5 ³ / ₄	1 ⁵ / ₁₆	4 ¹⁵ / ₁₆	1 ³ / ₁₆	2 ¹ / ₄	8 ³ / ₄	—	3/4	1 ¹ / ₈
	83WFA	6 ⁷ / ₈	3 ¹³ / ₁₆	5 ³ / ₄	1 ⁵ / ₁₆	4 ¹⁵ / ₁₆	3/4	2 ³ / ₁₆	10 ³ / ₄	—	3 ³ / ₈	1 ¹ / ₄
	83WFB	6 ⁷ / ₈	3 ¹³ / ₁₆	5 ³ / ₄	1 ⁵ / ₁₆	4 ¹⁵ / ₁₆	3/4	2 ³ / ₁₆	12 ³ / ₄	—	5 ³ / ₈	1 ¹ / ₄
3	905480	6 ⁷ / ₈	4 ³ / ₈	1 ⁵ / ₈	4 ¹⁵ / ₁₆	4 ¹⁵ / ₁₆	9/16	2 ³ / ₈	12	6	1 ¹ / ₄	1 ¹³ / ₃₂
	905481	6 ⁷ / ₈	4 ³ / ₈	1 ⁵ / ₈	4 ¹⁵ / ₁₆	4 ¹⁵ / ₁₆	9/16	2 ³ / ₈	14 ³ / ₄	6	4 ¹ / ₄	1 ¹³ / ₃₂
	905482	6 ⁷ / ₈	4 ³ / ₈	1 ⁵ / ₈	4 ¹⁵ / ₁₆	4 ¹⁵ / ₁₆	9/16	2 ³ / ₈	17 ⁵ / ₈	6	7	1 ¹³ / ₃₂

† Clearance dimensions "F" and "G" are based on the largest beam on which trolley will operate. Dimension increases slightly for each smaller beam size.

**Dimension "K" occurs on smallest beam size only. On larger beams it is increased by the difference in flange width.

Specifications

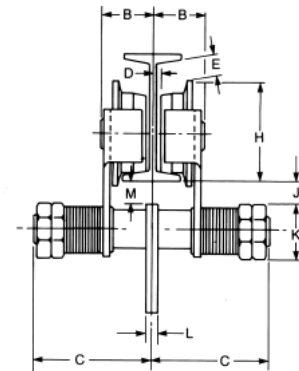
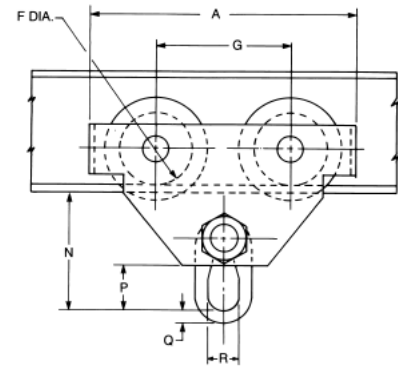
Rated capacity* (tons)	Product code	Min. beam depth (in.)	Min. radius curve	Adj. flange width (in.)	Approx. net weight (lbs.)
1/4	80	4	2'-6"	2 ⁵ / ₈ -4 ⁵ / ₈	13
	80SR	4	2'-6"	2 ⁵ / ₈ -4 ⁵ / ₈	13
	80WFA	4	2'-6"	5-7	14
1/2	81	4	2'-6"	2 ⁵ / ₈ -4 ⁵ / ₈	13
	81SR	4	2'-6"	2 ⁵ / ₈ -4 ⁵ / ₈	13
	81WFA	4	2'-6"	5-7	14
1	82	5	3'-0"	3-5	25
	82SR	5	3'-0"	3-5	25
	82WFA	5	3'-0"	5-7	26
	82WFB	5	3'-0"	7-9	27
2	83	6	4'-0"	3 ³ / ₈ -6	35
	83SR	6	4'-0"	3 ⁵ / ₈ -6	35
	83WFA	6	4'-0"	6-8	36
	83WFB	6	4'-0"	8-10	37
3	905480	6	4'-0"	3 ³ / ₈ -6	41
	905481	6	4'-0"	6 ¹ / ₈ -8 ⁷ / ₈	43
	905482	6	4'-0"	9-11	44

CM Series 633 wide range trolley

* Also available in hand geared

Simple, rugged, built for trouble-free service and ease of operation across a wide range of beam applications. Series 633 features:

- Rugged steel side plates formed to include bumpers and trolley guards
- Frames connected by steel equalizer pin, secured by two nuts on each side
- Universal tread flanged trackwheels equipped with shielded ball bearings
- Easy rolling on American standard shapes, wide flange shapes or patented rail
- Hardened wheels and axles for added strength and durability
- Spacer washers can be shifted inside or outside for easy adjustment to wide range of beams
- To be used with hook suspended hoist
- Suspension plate for easy attachment is standard
- Bearings prepacked with lifetime lubricant
- One-year warranty
- Imported



Clearance dimensions (in.)

Dimension	Rated capacity* (tons)				
	1/2	1	2	3	5
Min. radius curve (in.)	35	35	59	71	94
A	8 1/2	10 13/16	12 7/32	14 13/16	18 1/8
B**	2 5/32	2 13/32	2 11/16	3 1/16	3 21/32
C	5 1/16	6 9/16	6 25/32	7 13/32	8
D**	1/16	7/16	13/32	1/2	9/16
E**	-1/4	11/32	25/32	17/16	23/16
F	2 9/32	3 15/32	3 15/16	5 1/8	6 1/8
G	4	4 7/8	5 1/2	6 9/16	7 7/8
H**	3	4 11/32	4 29/32	6 1/8	7 9/32
J**	1 1/32	1 1/32	25/32	13/16	2 1/8
K	1 3/4	2 3/32	2 1/2	3 13/32	3 13/32
L	1/2	1/2	5/8	5/8	13/16
M**	15/16	31/32	5/16	15/16	17/16
N**	4 3/32	5 1/16	5 13/16	7 7/16	9 15/16
P	1 7/32	1 3/4	2 5/32	2 9/16	3 23/32
Q	1 9/32	1 9/32	13/16	1 3/8	1 25/32
R	3 1/32	1 5/32	1 5/8	1 31/32	2 9/16

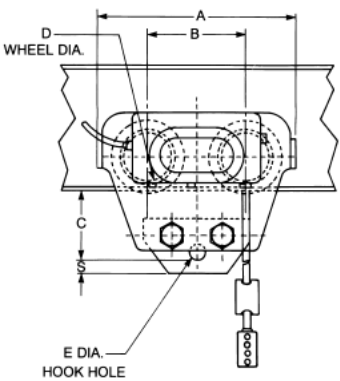
**Dimensions given are for minimum S-beam and will vary with larger beams.

Specifications

Rated capacity* (tons)	Product code	Adj. for standard S-beams		Tread diameter (in.)	Net weight (lbs.)	Shipping weight (lbs.)
		Depth of beam (in.)	Flange width (in.)			
1/2	3302	3-15	2 1/2-5 5/8	2 9/32	15	17
1	3304	5-24	3-8	3 15/32	34	36
2	3306	6-24	3 5/8-8	3 15/16	50	53
3	3307	8-24	4-8	5 1/8	95	100
5	3309	10-24	4 5/8-8	6 1/8	172	175

RailStar motor driven trolley

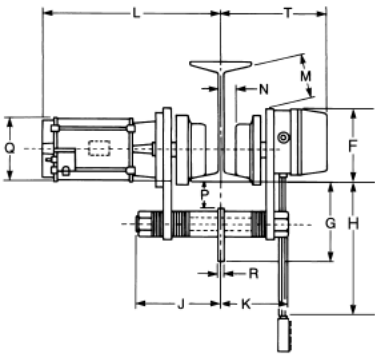
- Fits wide range of beam sizes for maximum versatility
 - Universal use with any hook suspended single speed hoists that are equipped with reversing contactor
 - Steel plate side frames
 - Steel spur gearing for optimum strength and smooth operation
 - Durable hardened cast iron trackwheels that operate on standard S-beams or flat flanged beams
 - Lifetime lubricated double row ball bearings for high
- efficiency, low maintenance
 - Cast iron control enclosure
 - Four-button control station included for operating single speed hoist. Drop proportioned to 20' lift
 - 115 volt control circuit
 - Trolley guards standard
 - One-year warranty
 - Metric rated
 - Imported



Clearance dimensions (in.)

Dimension	Rated capacity* (tons)	
	1/8 - 2	3
A	12 ³ / ₄	14 ¹ / ₈
B	6 ³ / ₈	6 ³ / ₄
C**	4 ¹³ / ₁₆	5 ¹ / ₄
D	3 ⁹ / ₁₆	3 ¹⁵ / ₁₆
E	2 ⁹ / ₁₆	2 ¹⁵ / ₁₆
F**	4 ³ / ₄	5 ³ / ₁₆
G**	6	6 ⁵ / ₁₆
H**	17 ft.	17 ft.
J	7 ¹ / ₂	9 ¹⁵ / ₁₆
K	4 ¹ / ₈	4 ¹¹ / ₁₆
SINGLE PHASE L	12 ³ / ₄	15 ³ / ₁₆
THREE PHASE L	11 ⁷ / ₁₆	13 ⁷ / ₈
M**	1 ¹ / ₂	2 ¹⁵ / ₁₆
N**	3/ ₈	3/ ₄
P**	1 ⁷ / ₁₆	1 ⁹ / ₁₆
Q**	5 ¹ / ₈	5 ⁷ / ₈
R	1/ ₂	3/ ₄
S	1 ¹ / ₁₆	1 ¹ / ₁₆
T**	8 ⁷ / ₈	9 ⁹ / ₁₆

**Dimensions given are for minimum S-beam and will vary with larger beams.



★

▲

WARNING

Overloading and improper use can result in injury.

To avoid injury:

- Do not exceed working load limit, load rating capacity
- Do not use to lift people or loads over people.
- use only alloy chain for overhead lifting.
- Read and follow all instructions.

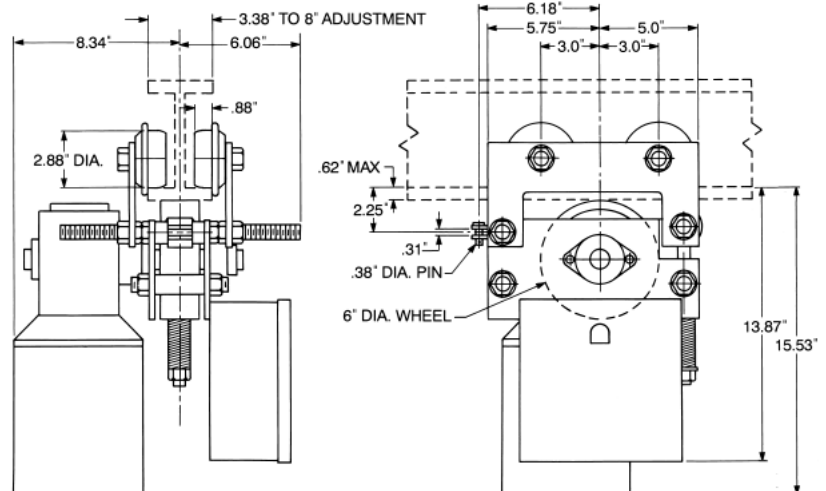
Tractor drive

Power tractor drives push-type hoists, trolleys and underhung cranes. Easy installation without removing or modifying existing equipment. This drive also features:

- Compact design
- Capacities up to 5 tons available in 230/460-3-60 operation
- Monorail trolley track or twin unit synchronized drives available
- Direct drive with right angle worm gear reducer
- Enclosed aluminum housing for lubrication of gears and bearings
- Steel plate construction with tie-rods for easy adjustment
- Squirrel cage motor with permanently lubricated bearings
- Fully machined trolley wheels with universal tread operate on tapered or flat flange beams
- Adjusts to standard I-beams or flat flange beams up to 8 inches wide
- Standard magnetic reversing contactor with mechanical interlock inside NEMA 1 enclosure
- One-year warranty
- Made in U.S.A.

Options

- 575 volt 3 phase 60 hertz operation
- 2, 4, 6 & 8 button push-button station
- Additional push-button cable length (10' standard)
- NEMA 12, 4 or 4X control enclosures
- Motor brake
- Soft start (recommended for speeds above 70 F.P.M.)
- Two speed or variable controls
- Transformer for 115 volt control power
- Tow bar
- For other beams, options or custom designs, consult factory



Rated capacity* (tons)	Product code	Speed (F.P.M.)	Std. beam size (in.)	Min. radius curve (in.)	Max. flange thickness (in.)	Approx. shipping wt. (lbs.)
1	TD 235	35	3.38-8	36	.62	110
1	TD 255	55	3.38-8	36	.62	110
1	TD 270	70	3.38-8	36	.62	110
1	TD 2105	105	3.38-8	36	.62	110
1 1/2	TD 335	35	3.38-8	36	.62	110
1 1/2	TD 355	55	3.38-8	36	.62	110
1 1/2	TD 370	70	3.38-8	36	.62	110
1 1/2	TD 3105	105	3.38-8	36	.62	110
2 1/2	TD 535	35	3.38-8	36	.62	110
2 1/2	TD 555	55	3.38-8	36	.62	110
2 1/2	TD 570	70	3.38-8	36	.62	110
3	TD 635	35	3.38-8	36	.62	110
3	TD 655	55	3.38-8	36	.62	110
5	TD 1035	35	3.38-8	36	.62	110